

Working Instructions

- mechanical -



LT22i

CONTENTS

1	Exterior Views.....	4
1.1	LT22i	4
2	Tools	5
3	Disassembly.....	6
3.1	Cap Cosmetic cap assy	6
3.2	Cap Top Assembly	7
3.3	Cover Rear Metal Assy	8
3.4	Carrier Internal Frame Assembly	10
3.5	Carrier LCD Flex Support Assembly.....	11
3.6	Main PBA	13
3.7	Transparent Belt Assembly & Front Cover Assy	14
4	Replacement	16
4.1	Cap Cosmetic cap assy	16
4.2	Cap Top Assembly	16
4.3	Cover Rear Metal Assy	16
4.4	Carrier Internal Frame Assembly	16
4.5	Transparent Belt Assembly	17
4.6	Antenna NFC Flex	18
4.7	Audio Jack.....	19
4.8	Battery & Foil Battery Adhesive	20
4.9	Camera.....	23
4.10	Cap Metal Sim.....	25
4.11	Carrier Antenna Assy.....	27
4.12	Carrier LCD Assembly	29
4.13	Carrier LCD Flex Support Assembly.....	30
4.14	Compass tape.....	34
4.15	Connector Grommet	35
4.16	Core Unit Label.....	36
4.17	Cover Plastic NFC Slit.....	37
4.18	Cushion Conductive Grounding	38
4.19	Cushion Grounding Pad 1	39
4.20	Cushion Thermal Interface Pad 2.....	41
4.21	Display	42
4.22	Ear Speaker and Gasket Earspeaker	46
4.23	Foil Adhesive Double Side Camera Sealing.....	48
4.24	Foil Adhesive Double Side Flash Lens	49
4.25	Foil Adhesive Double Side Flash Silicone.....	50
4.26	Foil Adhesive Double Side LCD Flex	52
4.27	Front Grommet Assembly	54

4.28 Gasket	55
4.29 Gasket HDMI Shield Can.....	57
4.30 Gasket LMU Shield Can	58
4.31 Gasket Loudspeaker	59
4.32 Gasket Vibrator	60
4.33 Key Camera	61
4.34 Key Volume / Power	63
4.35 Liquid Indicator	65
4.36 PBA Interconnect Flex	66
4.37 PBA Key flex.....	68
4.38 PBA Microphone flex	71
4.39 Touch Flex Shielding	73
4.40 Vibrator	75
4.41 Water Indicator 3x3	76
4.42 Window Flash Lens.....	77
4.43 Board Swap - Replacement	79
4.44 Board Swap – Change Label	79
4.45 Board Swap – Customize of Software	79
5 Reassembly.....	80
5.1 Front Cover Assy & Transparent Belt Assembly	80
5.2 Main PBA	81
5.3 Carrier LCD Flex Support Assembly.....	82
5.4 Carrier Internal Frame Assembly	84
5.5 Cover Rear Metal Assy	85
5.6 Cap Top Assembly	87
5.7 Cap Cosmetic cap assy	87
6 Revision History	89

**For general information about mechanical repair related issues, refer to
1220-1333: Generic Repair Manual - mechanical**

1 Exterior Views

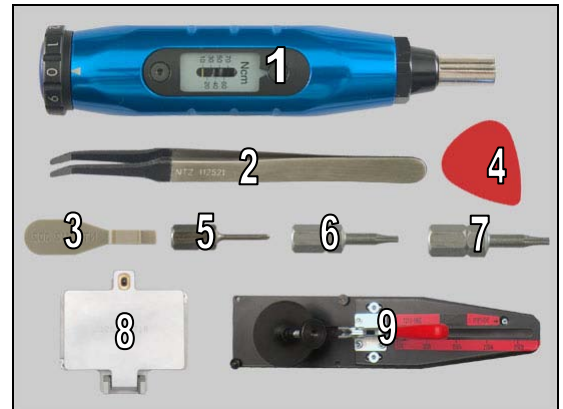
1.1 LT22i



2 Tools

SPECIAL TOOLS

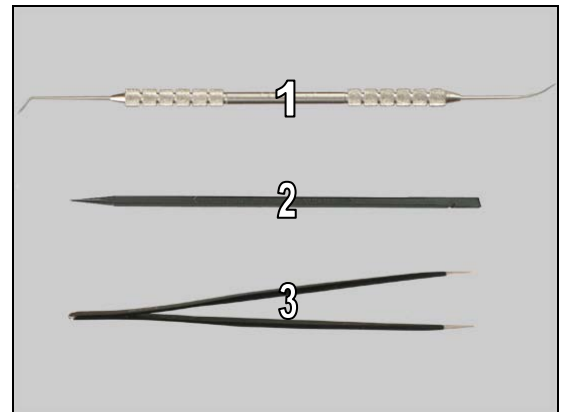
1. Torque Screwdriver
2. Flex Film Assembly Tool
3. Front Opening Tool
4. Guitar Pick
5. Bits (JCIS No 0)
6. Bits (T4)
7. Bits (T5)
8. LCD Pressure Fixture
9. Pressure Tool



For part no's on the tools above, refer to the 'Tools Catalogue/Matrix'!

STANDARD TOOLS

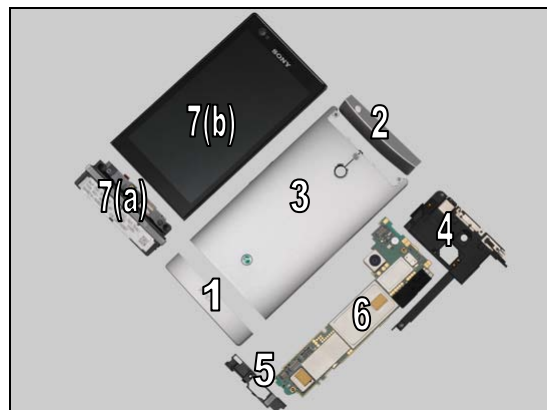
1. Dentist Hook
2. Nylon Pointer
3. Tweezers



3 Disassembly

The disassembly is done in the following order:

1. Cap Cosmetic cap assy
2. Cap Top Assembly
3. Cover Rear Metal Assy
4. Carrier Internal Frame Assembly
5. Carrier LCD Flex Support Assembly
6. Main PBA
7. Transparent Belt Assembly (a) & Front Cover Assy (b)



3.1 Cap Cosmetic cap assy

There are two snap hooks securing the Cap Cosmetic cap assy.



Pull the Cap Cosmetic cap assy with fingers as shown in picture to release one hook.



Do the same to release the second hook and remove the Cap Cosmetic cap assy.



Disassembly

3.2 Cap Top Assembly

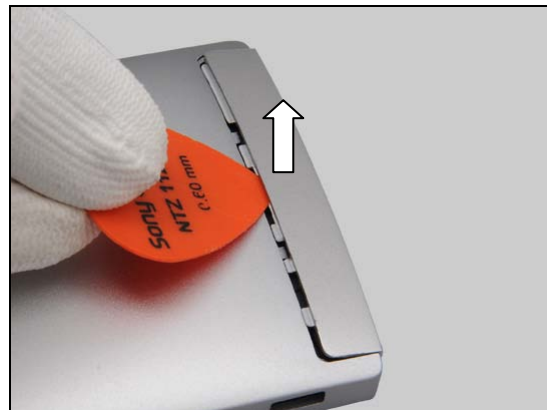
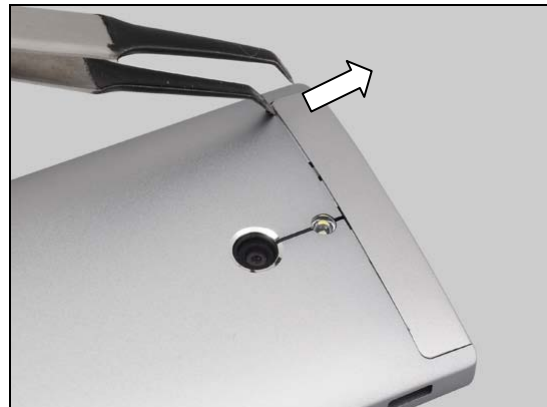
Carefully push the Cap Top Assembly to show a gap between the Cap Top Assembly and the Cover Rear Metal Assy as shown by using a Flex Film Assembly Tool.

Do not damage the Cover Rear Metal Assy!

Insert a Guitar Pick into the gap as shown in picture and gently push the Cap Top Assembly to release the hook.

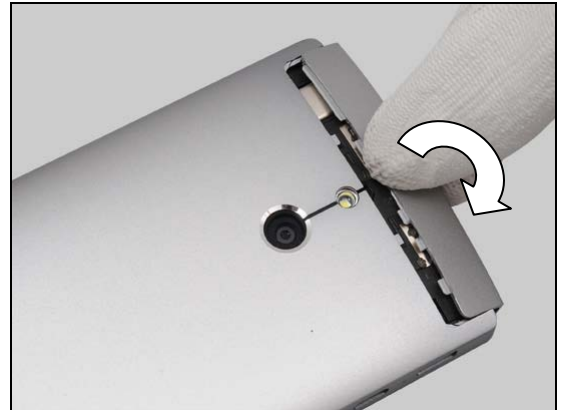
Gently pull upwards to release the hooks of the Cap Top Assembly as shown.

Do the same to release this side of the Cap Top Assembly.



Disassembly

Bend the Cap Top Assembly with fingers to make it loose as shown.



Remove the Cap Top Assembly.

Scrap! Not to be reused!



3.3 Cover Rear Metal Assy

Remove the two screws M1.4x3.5 by using a screwdriver with Bits (JCIS No 0).

Scrap! Not to be reused!



Remove the Cosmetic side screw by using a screwdriver with Bits (T4).

Scrap! Not to be reused!



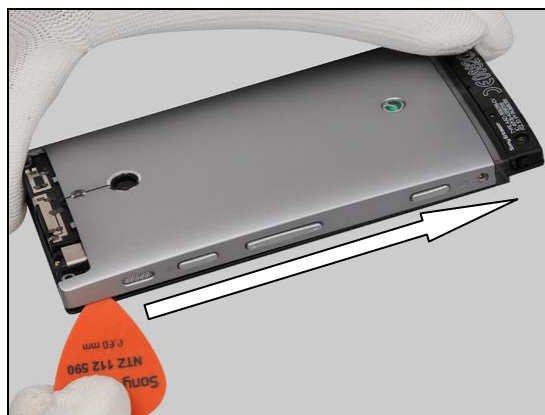
Disassembly

Remove the Cosmetic side screw on the opposite side by using a screwdriver with Bits (T4).

Scrap! Not to be reused!



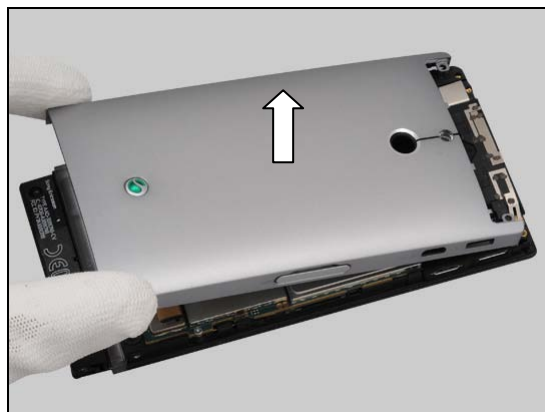
Insert a Guitar Pick as shown in picture and gently slide along to release this side of the Cover Rear Metal Assy.



Do the same on the opposite side.



Remove the Cover Rear Metal Assy by lifting straight up.



Disassembly

Disconnect the BtB connector of the Battery by using a Flex Film Assembly Tool.



3.4 Carrier Internal Frame Assembly

Remove the screw M1.4x3.5 by using a screwdriver with Bits (JCIS No 0).

Scrap! Not to be reused!



Remove the screw Philips Len:3.5 Diam:1.2 by using a screwdriver with Bits (JCIS No 0).

Scrap! Not to be reused!

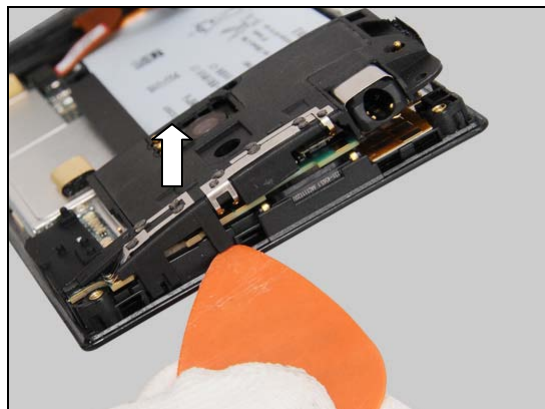


Insert a Guitar Pick as shown in picture and gently pull upwards to release this side.

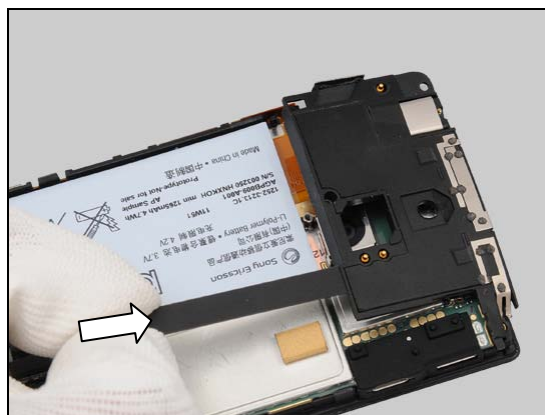


Disassembly

Do the same to release the hook of the Carrier Internal Frame Assembly as shown.



Gently lift up the Carrier Internal Frame Assembly at approximately 15 degree as shown in picture and push it to make it loose.

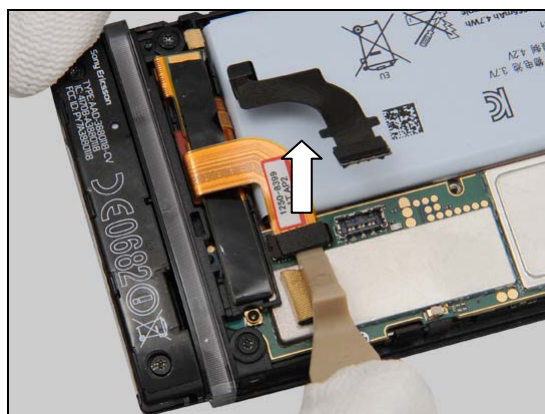


Gently remove the Carrier Internal Frame Assembly from the front unit.



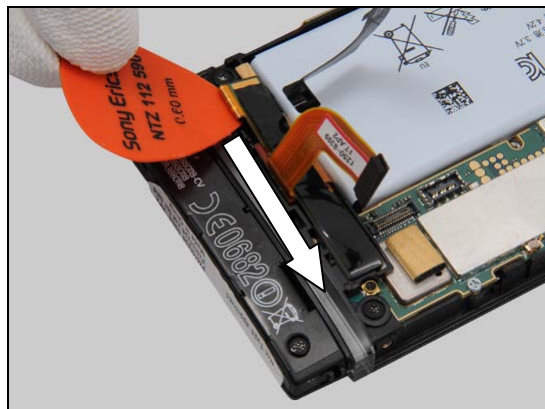
3.5 Carrier LCD Flex Support Assembly

Use a Front Opening Tool to disconnect the BtB connector.

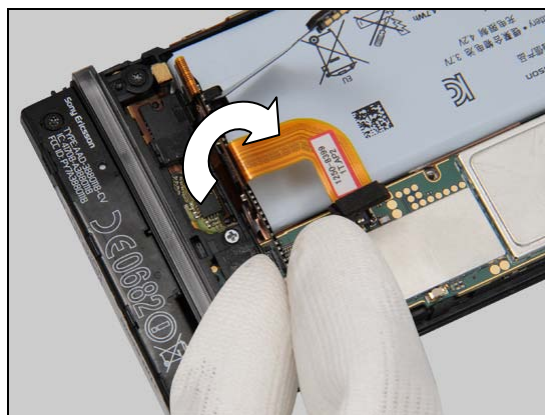


Disassembly

Insert a Guitar Pick as shown in picture and gently slide along to release the FPC.

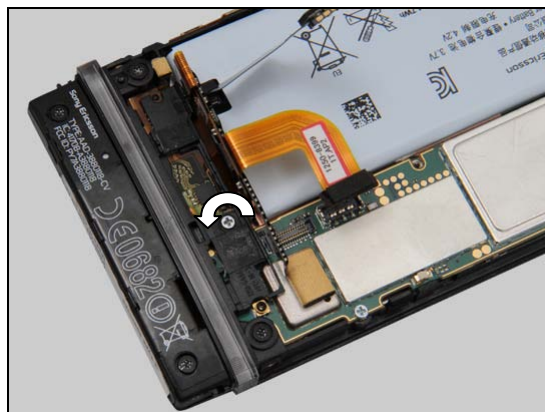


Turn the FPC over.

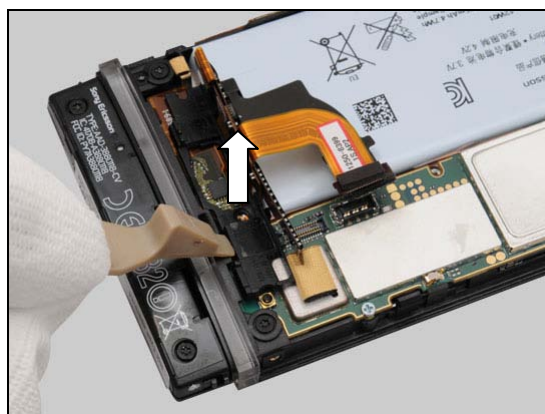


Remove the screw Other Len:2.0 Diam:1.2 M1.2x2.0 by using a screwdriver with Bits (JCIS No 0).

Scrap! Not to be reused!

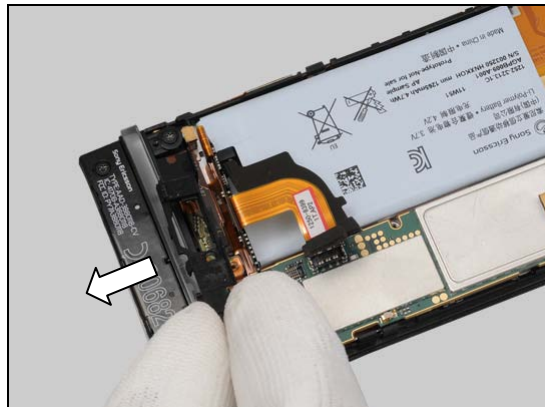


Gently insert a Front Opening Tool underneath the Carrier LCD Flex Support Assembly to release it.



Disassembly

Remove it with fingers

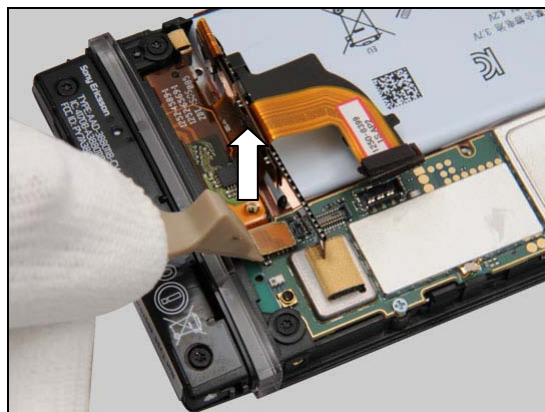


3.6 Main PBA

Use a Front Opening Tool to disconnect the BtB connector as shown.

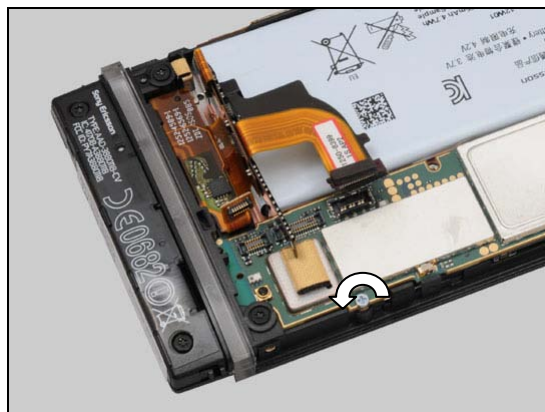


Disconnect the BtB connector by using a Front Opening Tool.



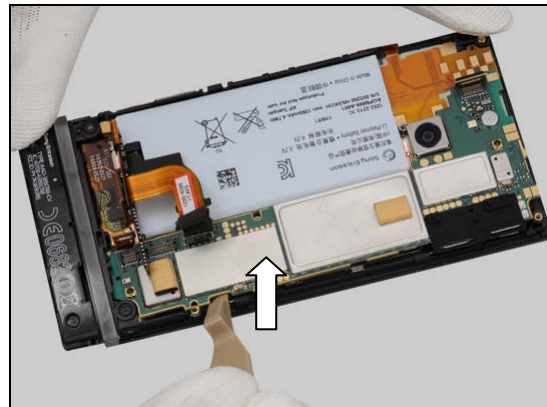
Remove the screw Other Len:2.0 Diam:1.2 M1.2x2.0 by using a screwdriver with Bits (JCIS No 0).

Scrap! Not to be reused!

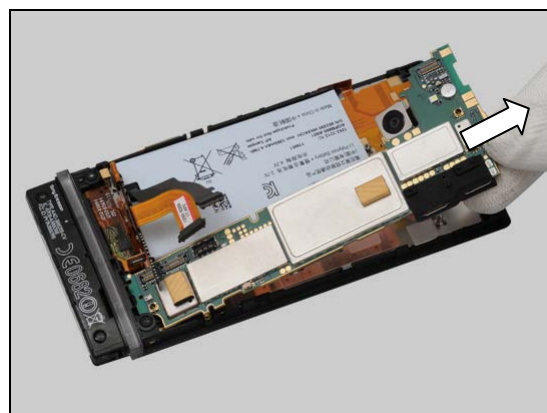


Disassembly

Insert the Front Opening Tool to release the Main PBA from this side as shown in picture.



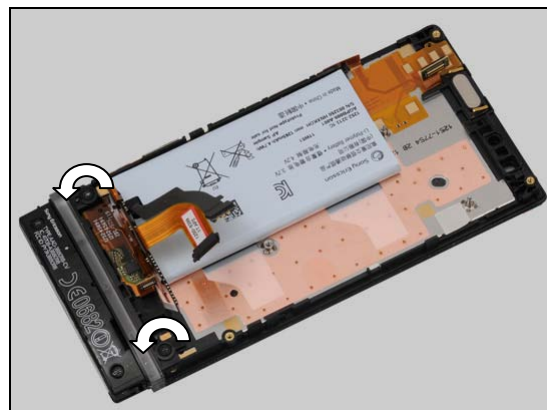
Gently lift up the Main PBA as shown in picture and remove it.



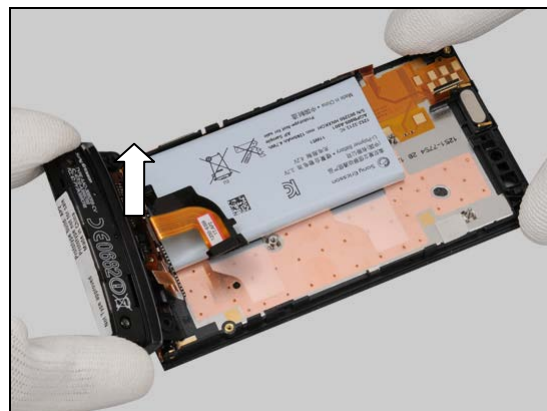
3.7 Transparent Belt Assembly & Front Cover Assy

Remove the two screws Other Len:0.0 Diam:0.0 Screw Black by using a screwdriver with Bits (T5).

Scrap! Not to be reused!

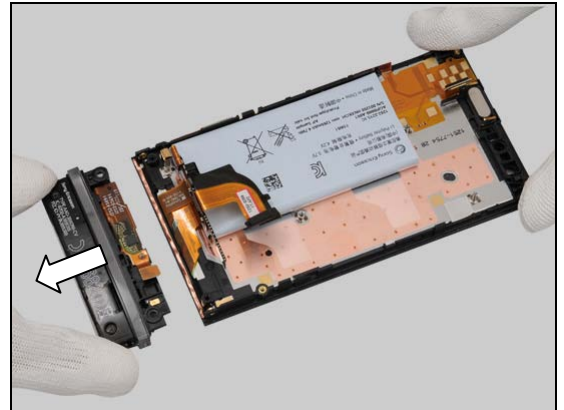


Lift up the Transparent Belt Assy to release it.



Disassembly

Gently remove the Transparent Belt Assy from the front cover Assy.



4 Replacement

4.1 Cap Cosmetic cap assy

Follow the 3.1 Disassembly instructions!

Prepare a new Cap Cosmetic cap assy.

Follow the 5.7 Reassembly instructions!



4.2 Cap Top Assembly

Follow the 3.1 – 3.2 Disassembly instructions!

Scrap! Not to be reused!

Prepare a new Cap Top Assembly.

Follow the 5.6 – 5.7 Reassembly instructions!



4.3 Cover Rear Metal Assy

Follow the 3.1 – 3.3 Disassembly instructions!

Prepare a new Cover Rear Metal Assy.

Follow the 4.6, 4.33 and 4.34 Installation instructions!

Follow the 5.5 – 5.7 Reassembly instructions!



4.4 Carrier Internal Frame Assembly

Follow the 3.1 – 3.4 Disassembly instructions!

Follow the 4.7 Removal instructions!

Prepare a new Carrier Internal Frame Assembly.

Follow the 4.7 Installation instructions!

Follow the 5.4 Reassembly instructions

Follow the 4.31 Installation instructions!

Follow the 5.5 – 5.7 Reassembly instructions!



Replacement

4.5 Transparent Belt Assembly

Follow the 3.1 – 3.7 Disassembly instructions!

Follow the 4.16, 4.11, 4.36 and 4.38 Removal instructions!

Prepare a new Transparent Belt Assembly.

Follow the 4.38, 4.36, 4.11 and 4.16 Installation instructions!

Follow the 5.1 – 5.7 Reassembly instructions!



Replacement

4.6 Antenna NFC Flex

Follow the 3.1 – 3.3 Disassembly instructions!

Carry out the Removal as described below.

Prepare a new Antenna NFC Flex.

Carry out the Installation as described below.

Follow the 5.5 – 5.7 Reassembly instructions!

REMOVAL

Insert the Front Opening Tool underneath and slide along to release the Antenna NFC Flex as shown.

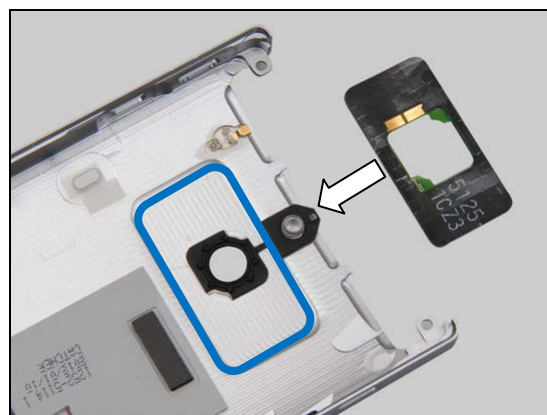
Scrap! Not to be reused!



INSTALLATION

Place the Antenna NFC Flex in its proper position as indicated by blue rectangles.

Note: Ensure the orientation of the Antenna NFC Flex to be installed as shown!



Press along to secure its attachment.



Replacement

4.7 Audio Jack

Follow the 3.1 – 3.4 Disassembly instructions!

Carry out the Removal as described below.

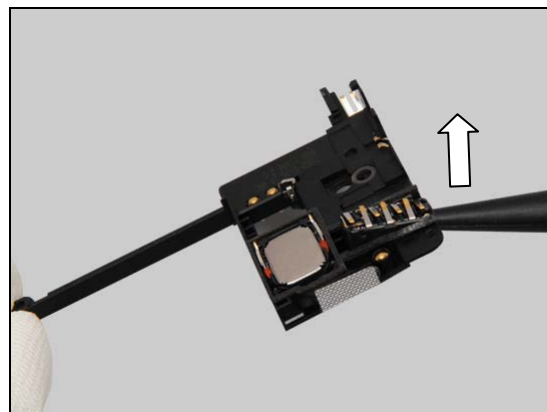
Prepare a new Audio Jack.

Carry out the Installation as described below.

Follow the 5.4 – 5.7 Reassembly instructions!

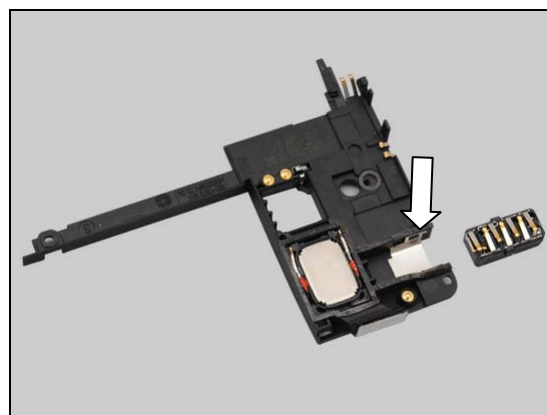
REMOVAL

Insert a Nylon Pointer into the hole of the Audio Jack and pull upwards to release it.

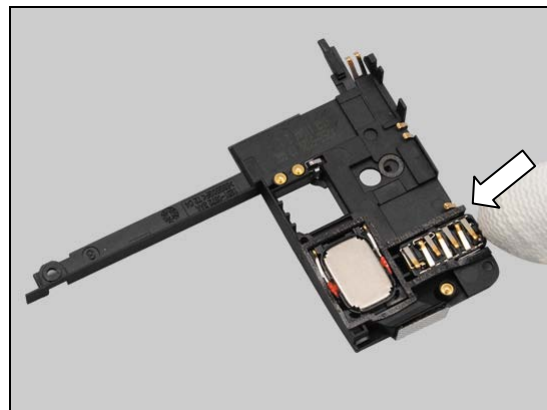


INSTALLATION

Place the Audio Jack into its socket.



Press to secure its position.



Replacement

4.8 Battery & Foil Battery Adhesive

Follow the 3.1 – 3.6 Disassembly instructions!

Carry out the Removal as described below.

Prepare a new Battery and the new Foil Battery Adhesives.

Carry out the Installation as described below.

Follow the 5.2 – 5.7 Reassembly instructions!

REMOVAL

Carefully pull out the two Foil Battery Adhesives in the horizontal direction by using your fingers as shown in the picture.

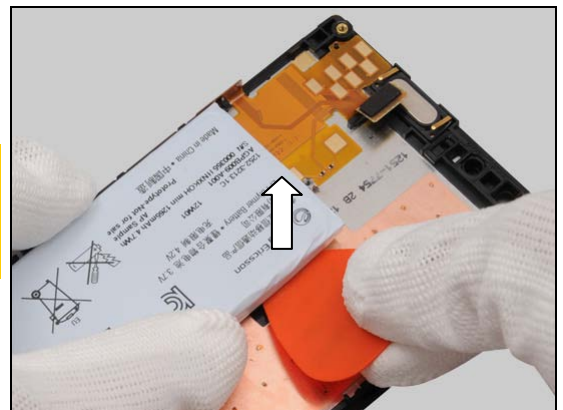
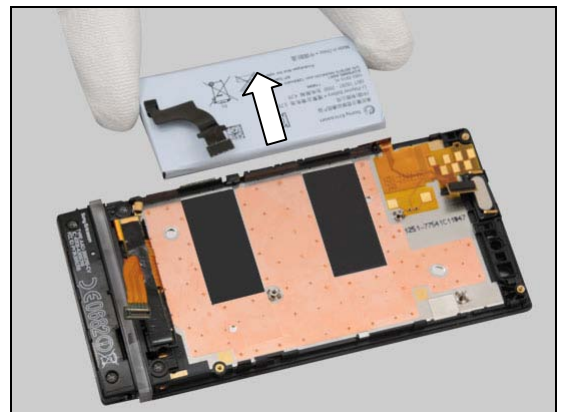
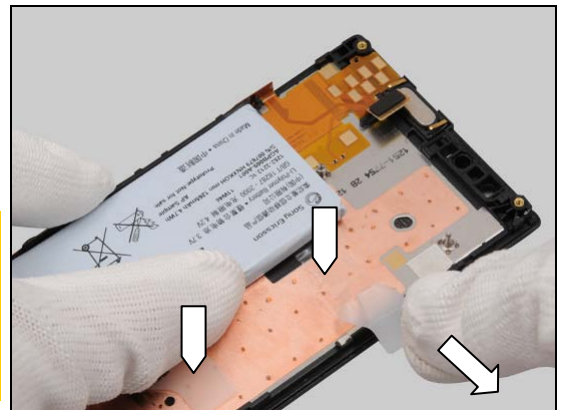
No tools are allowed!

Make sure the two Foil Battery Adhesives are completely out!

Be careful so you do not break the Foil Battery Adhesive!

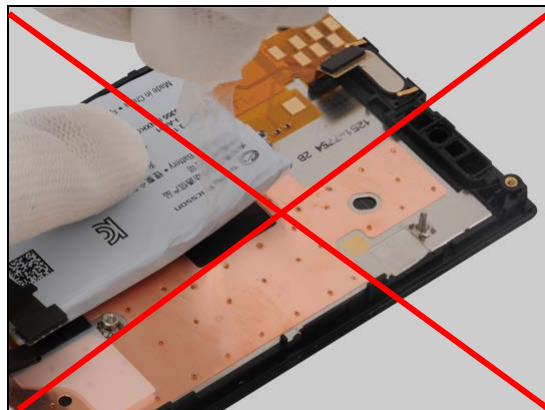
Remove the Battery.

If the Foil Battery Adhesive is damaged, carefully remove the Battery by using a Guitar Pick and then scrap the Battery since it cannot be reused after using a tool!



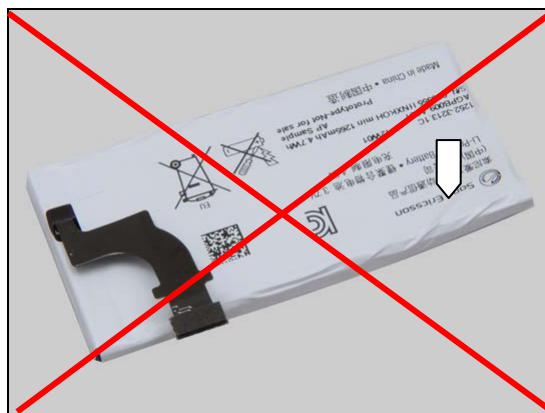
Replacement: Battery & Foil Battery Adhesive

Do not pull Foil Battery Adhesives upwards to remove battery as shown in picture!



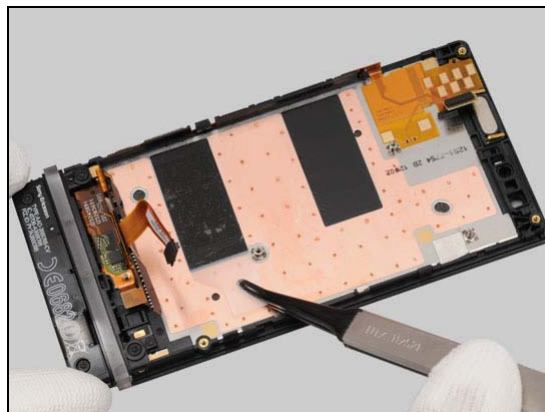
Carefully inspect the Battery after removing it.

Battery with visual signs of being bent, having been punctured etc. should be scraped after removal!

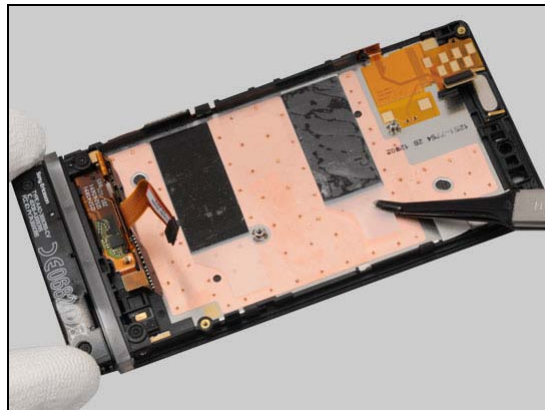


INSTALLATION

Attach a new Foil Battery Adhesive on its proper position as indicated by the black area.

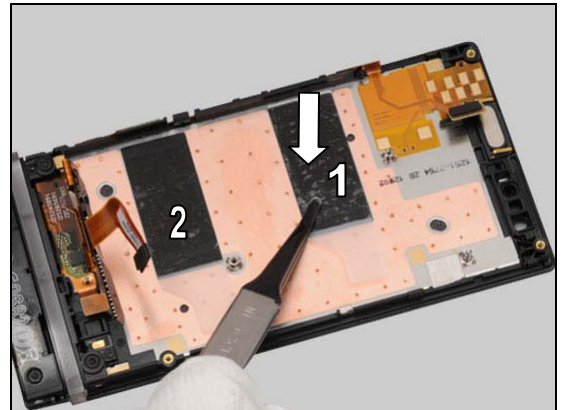


Do the same to the second Foil Battery Adhesive as shown.

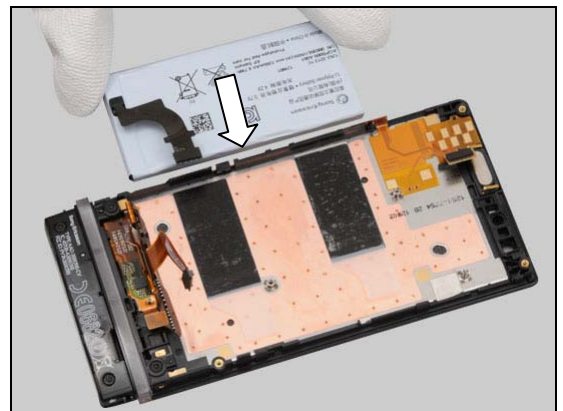


Replacement: Battery & Foil Battery Adhesive

Press along to make the two Foil Battery Adhesives securely attached.

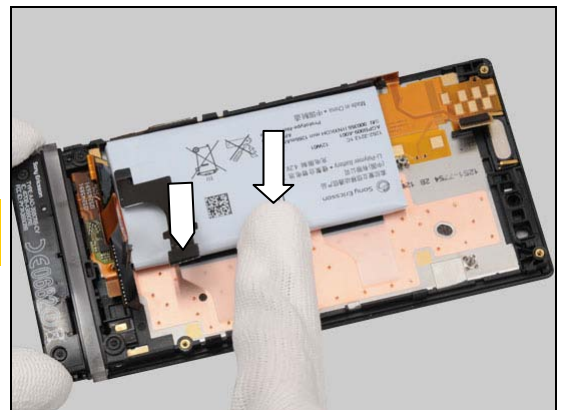


Place a new Battery in its proper position.



Press along to secure its attachment.

Make sure that the Gasket of the BtB connector is securely attached as indicated by the pointer!



Replacement

4.9 Camera

Follow the 3.1 – 3.6 Disassembly instructions!

Carry out the Removal as described below.

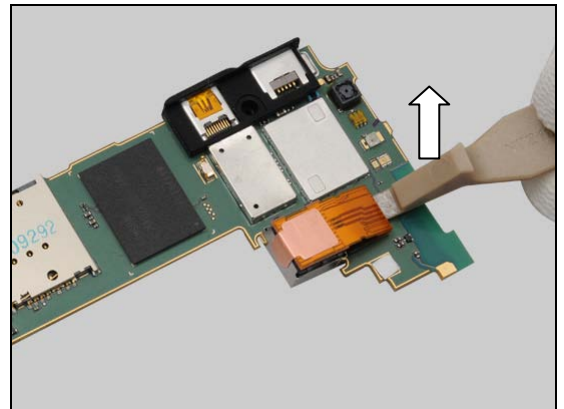
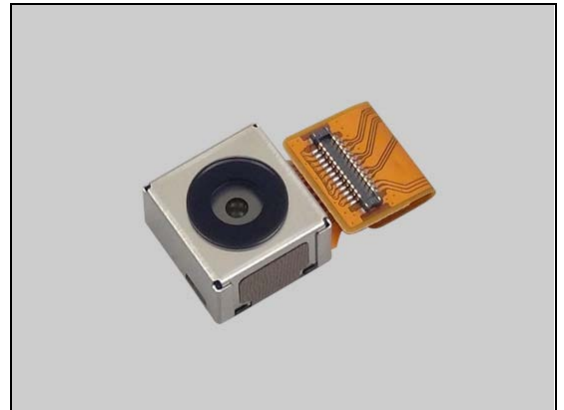
Prepare a new Camera.

Carry out the Installation as described below.

Follow the 5.2 – 5.7 Reassembly instructions!

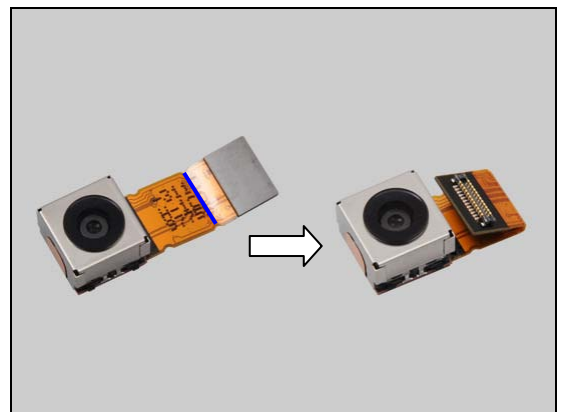
REMOVAL

Unsnap the BtB connector by using a Front Opening Tool and remove it.



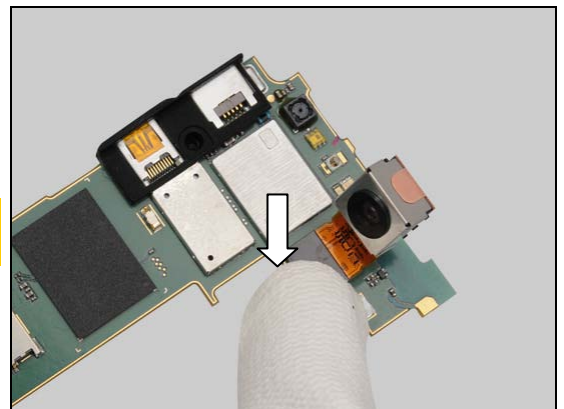
INSTALLATION

Prepare a new Camera and Pre-bend the FPC of the Camera as shown in picture.



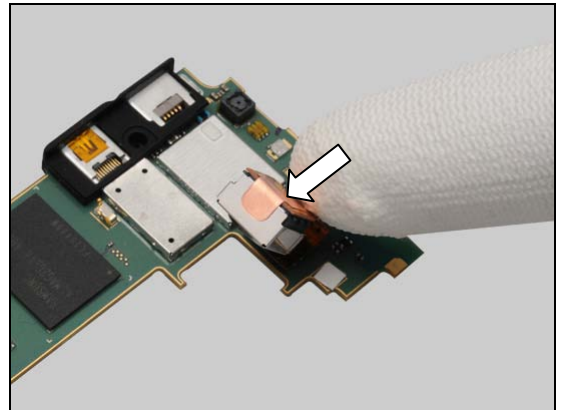
Snap the BtB connector.

Note: Ensure the orientation of the Camera to be installed as shown!

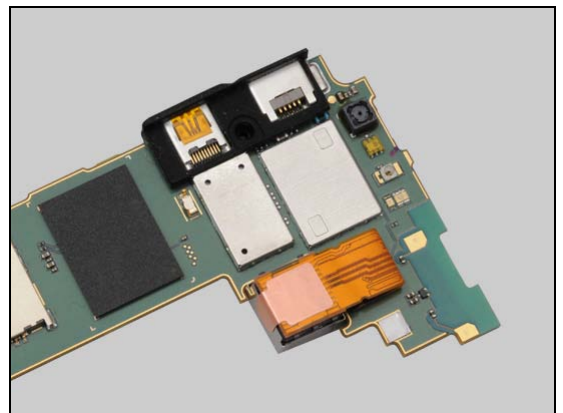


Replacement: Camera

Press it into its socket.



Make sure the Camera is mounted as shown in picture!



Replacement

4.10 Cap Metal Sim

Follow the 3.1 – 3.3 Disassembly instructions!

Carry out the Removal as described below.

Prepare a new Cap Metal Sim.

Carry out the Installation as described below.

Follow the 5.5 – 5.7 Reassembly instructions!

REMOVAL

Pull to remove the Cap Metal Sim with fingers.



INSTALLATION

Prepare a new Cap Metal Sim.

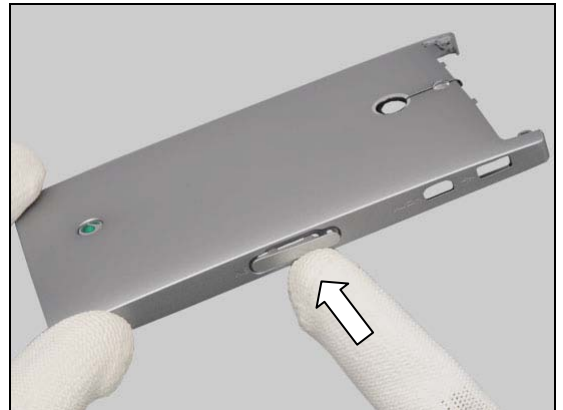


Insert the pump of the Cap Metal Sim into the hole by using a pair of Tweezers.



Replacement: Cap Metal Sim

Push it to secure its position.



Replacement

4.11 Carrier Antenna Assy

Follow the 3.1– 3.3 Disassembly instructions!

Follow the 4.16 Removal instructions!

Carry out the Removal as described below.

Follow the 4.40 Removal instructions!

Prepare a new Carrier Antenna Assy.

Follow the 4.40 and 4.41 Installation instructions!

Carry out the Installation as described below.

Follow the 4.16 Installation instructions!

Follow the 5.5 – 5.7 Installation instructions!

REMOVAL

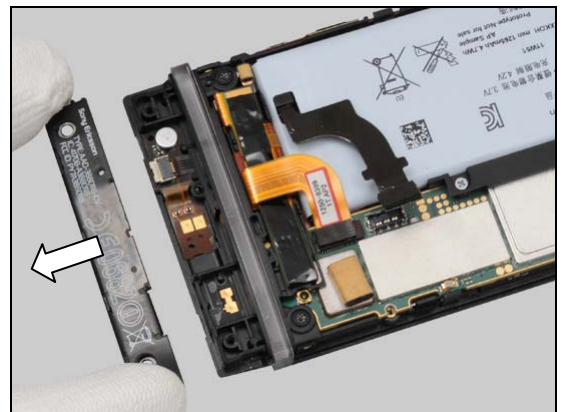
Remove the two screws Other Len:0.0 Diam:0.0 Screw Black by using a screwdriver with Bits (T5).

Scrap! Not to be reused!

Remove the Carrier Antenna Assy.

INSTALLATION

Place the Carrier Antenna Assy on the correct position.



Replacement: Carrier Antenna Assy

Apply 12 Ncm torque when tightening the two screws with Bits (T5).



Replacement

4.12 Carrier LCD Assembly

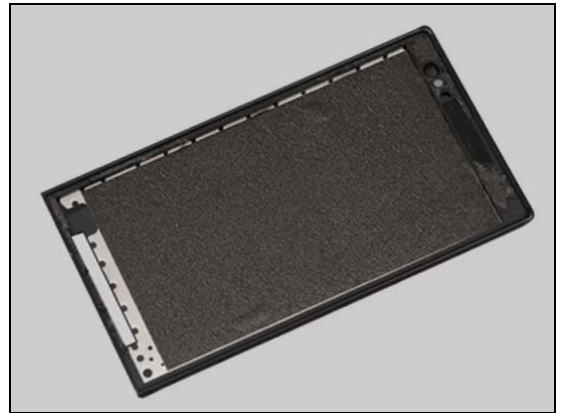
Follow the 3.1– 3.7 Disassembly instructions!

Follow the 4.21, 4.22 and 4.27 Removal instructions!

Prepare a new Carrier LCD Assembly.

Follow the 4.22, 4.27, 4.37, 4.21 and 4.8 Installation instructions!

Follow the 5.1 – 5.7 Installation instructions!



Replacement

4.13 Carrier LCD Flex Support Assembly

Follow the 3.1– 3.3 Disassembly instructions!

Carry out the Removal as described below.

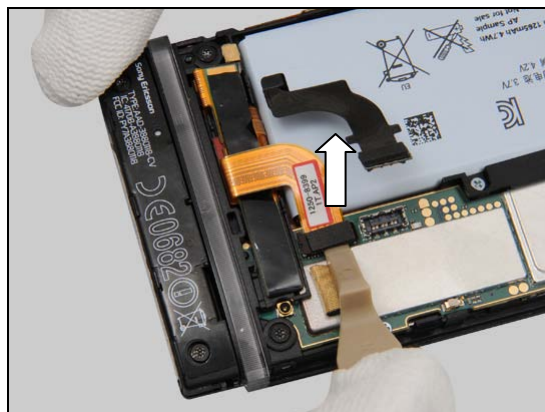
Prepare a new Carrier LCD Flex Support Assembly.

Carry out the Installation as described below.

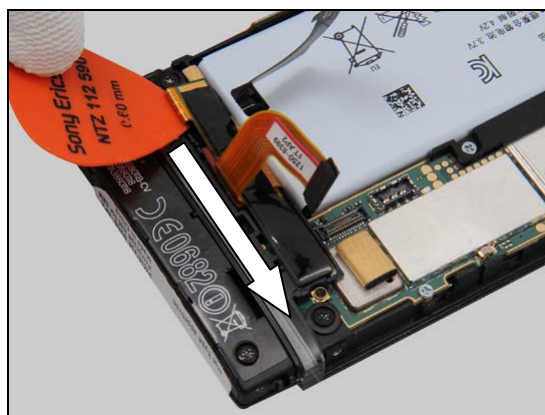
Follow the 5.5 – 5.7 Installation instructions!

REMOVAL

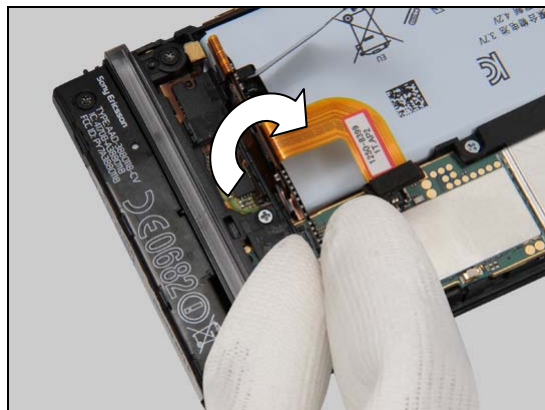
Use a Front Opening Tool to disconnect the BtB connector.



Insert a Guitar Pick as shown in picture and gently slide along to release the FPC.



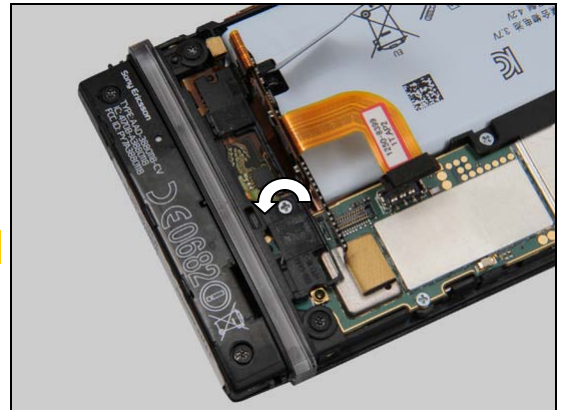
Turn the FPC over.



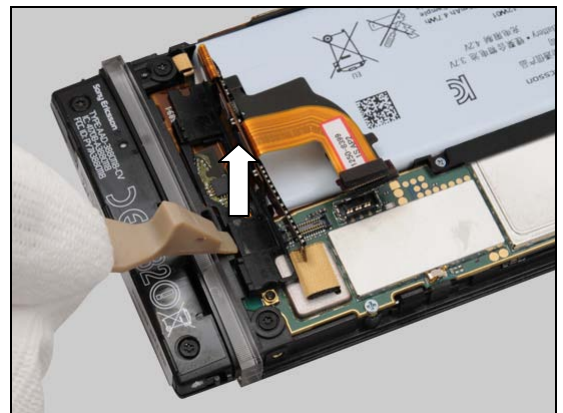
Replacement: Carrier LCD Flex Support Assembly

Remove the screw Other Len:2.0 Diam:1.2 M1.2x2.0 by using a screwdriver with Bits (JCIS No 0).

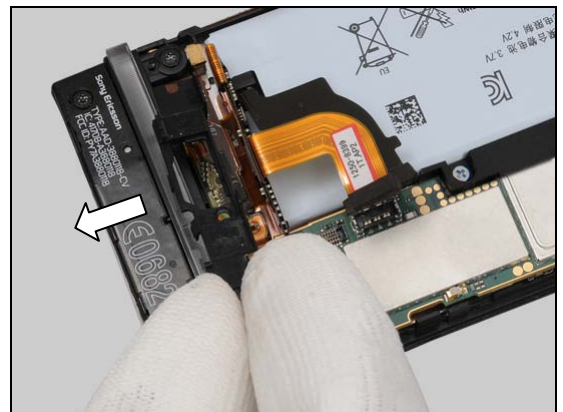
Scrap! Not to be reused!



Gently insert a Front Opening Tool underneath the Carrier LCD Flex Support Assembly to release it.

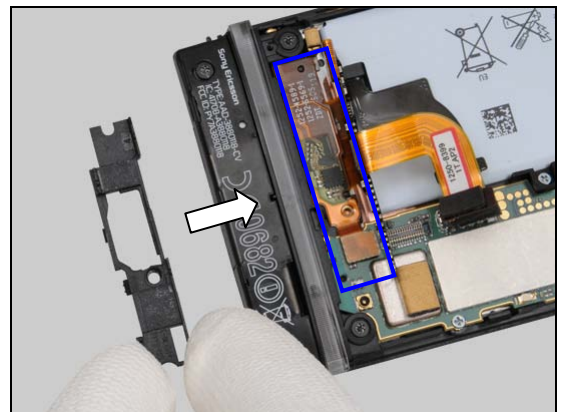


Remove it with fingers.



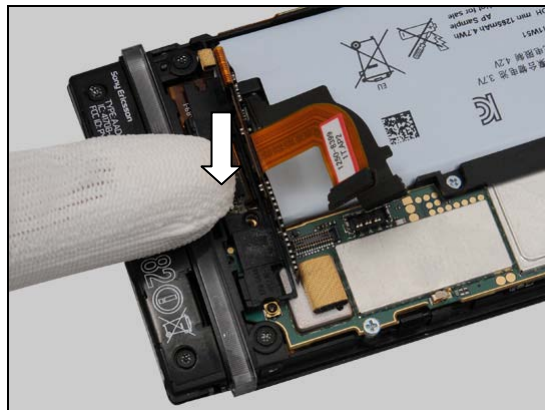
INSTALLATION

Place the Carrier LCD Flex Support Assembly on the proper position as shown.

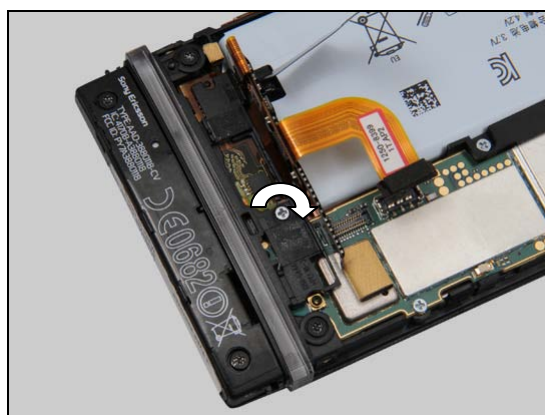


Replacement: Carrier LCD Flex Support Assembly

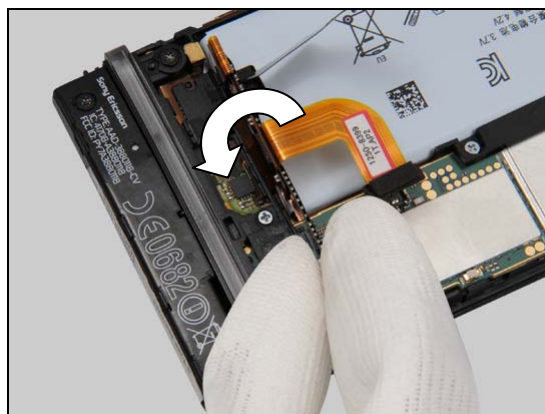
Push it into the cavity as shown in picture.



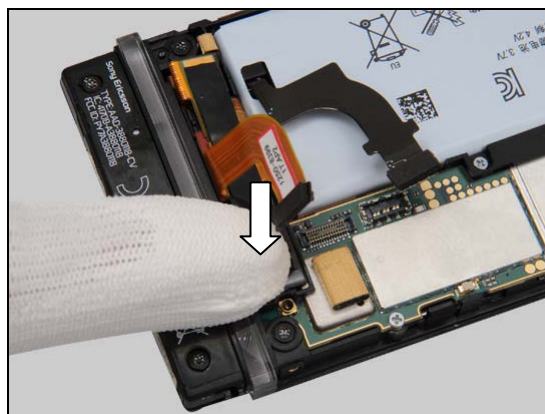
Apply 8 Ncm torque when tightening the screw with Bits (JCIS No 0).



Turn the FPC over.

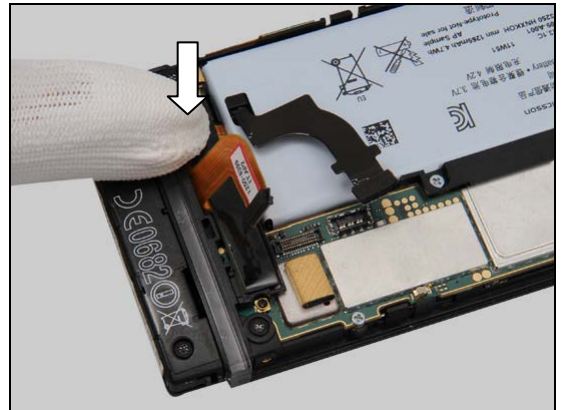


Press the FPC to secure its attachment as shown.

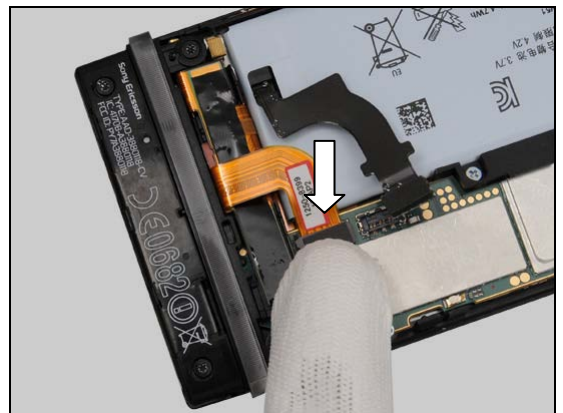


Replacement: Carrier LCD Flex Support Assembly

Do the same with this side.



Snap the BtB connector with finger.



Replacement

4.14 Compass tape

Follow the 3.1 – 3.3 Disassembly instructions!

Carry out the Removal as described below.

Prepare a new Compass tape.

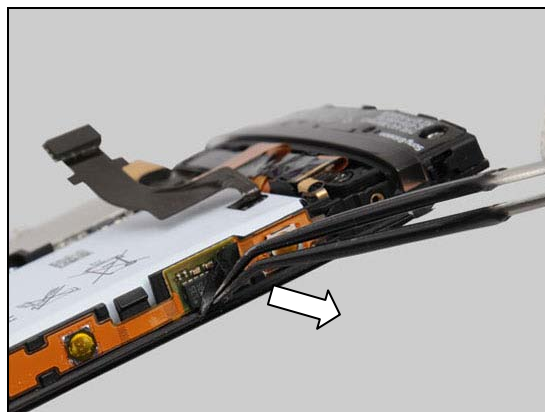
Carry out the Installation as described below.

Follow the 5.5 – 5.7 Reassembly instructions!

REMOVAL

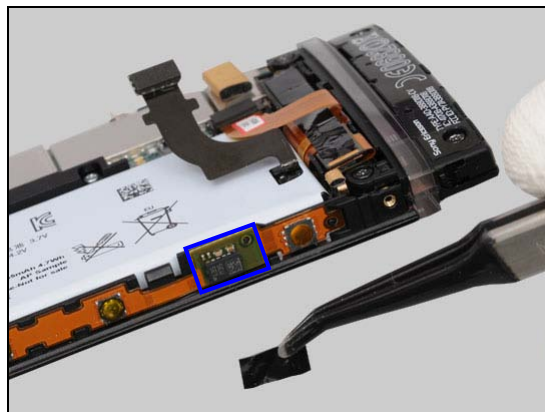
Peel off the Compass tape by using a Flex Film Assembly Tool.

Scrap! Not to be reused!

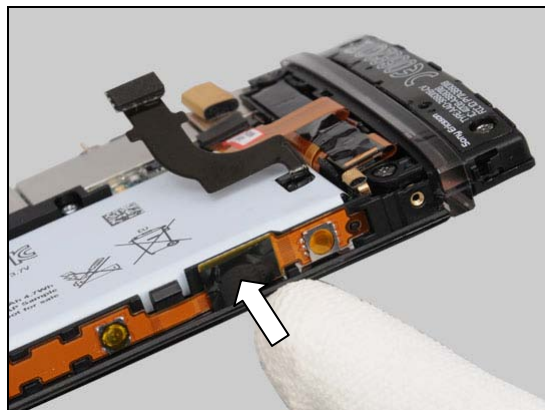


INSTALLATION

Place a new Compass Tape as indicated by the blue rectangle.



Press to secure its attachment.



Replacement

4.15 Connector Grommet

Follow the 3.1 – 3.6 Disassembly instructions!

Carry out the Removal as described below.

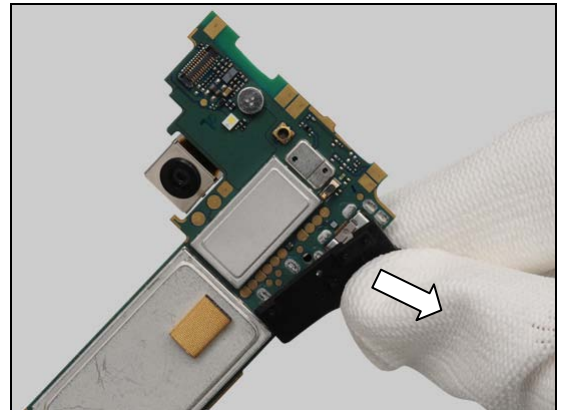
Prepare a new Connector Grommet.

Carry out the Installation as described below.

Follow the 5.2 – 5.7 Reassembly instructions!

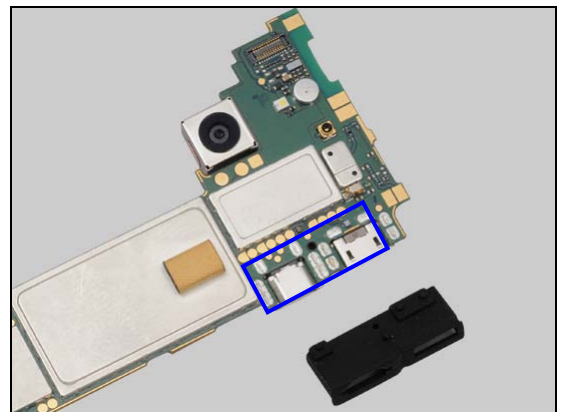
REMOVAL

Remove the Connector Grommet with fingers as shown.

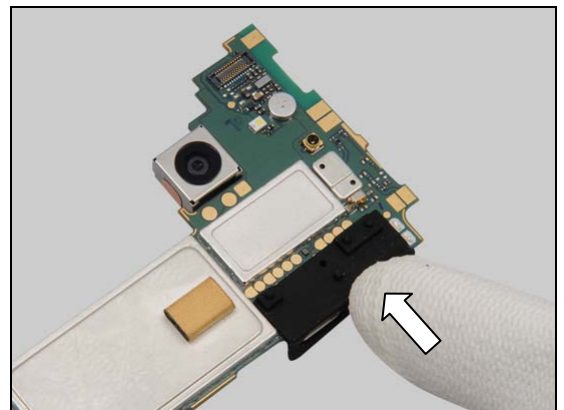


INSTALLATION

Place a new Connector Grommet on the Main PBA.



Press to secure its position.



Replacement

4.16 Core Unit Label

Follow the 3.1 Disassembly instructions!

Carry out the Removal as described below.

Prepare a new Core Unit Label.

Carry out the Installation as described below.

Follow the 5.7 Reassembly instructions!

REMOVAL

Read the old Label Mobile Phone and write the information into the 'LabelMake' program.

Carefully remove the Label.

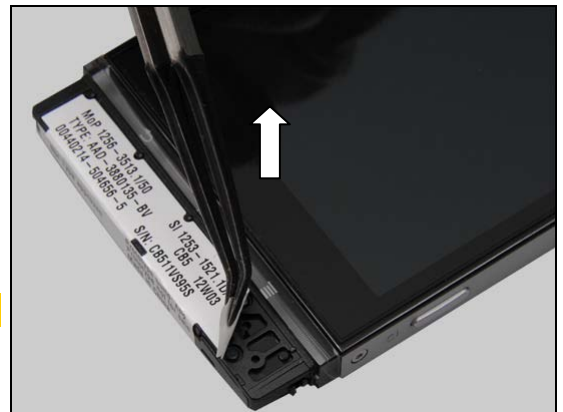
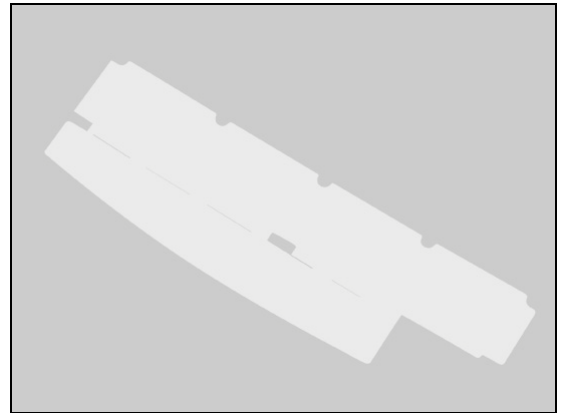
Scrap! Not to be reused!

INSTALLATION

Check that the proper label format is loaded in the Zebra printer and write a new Label by using the 'LabelMake' software.

Press along the surface to make the label securely attached as indicated by the blue circles.

One label only is allowed!



Replacement

4.17 Cover Plastic NFC Slit

Follow the 3.1 – 3.3 Disassembly instructions!

Follow the 4.6 Removal instructions!

Carry out the Removal as described below.

Follow the 4.23 Removal instructions!

Prepare a new Cover Plastic NFC Slit.

Follow the 4.23 Installation instructions!

Carry out the Installation as described below.

Follow the 4.6 Installation instructions!

Follow the 5.5 – 5.7 Reassembly instructions!

REMOVAL

Gently detach the Cover Plastic NFC Slit by using a Flex Film Assembly Tool.



INSTALLATION

Place a new Cover Plastic NFC Slit on the Cover Rear Metal Assy.



Press to secure its position and attachment.



Replacement

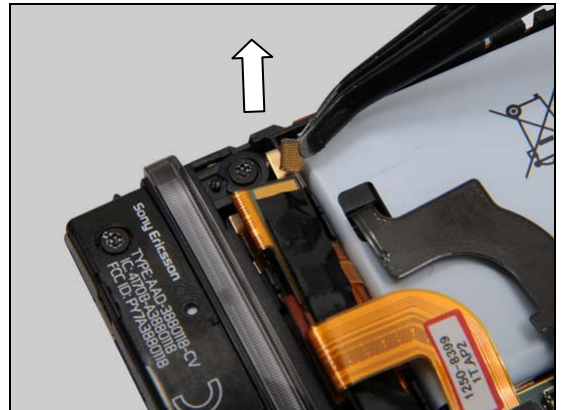
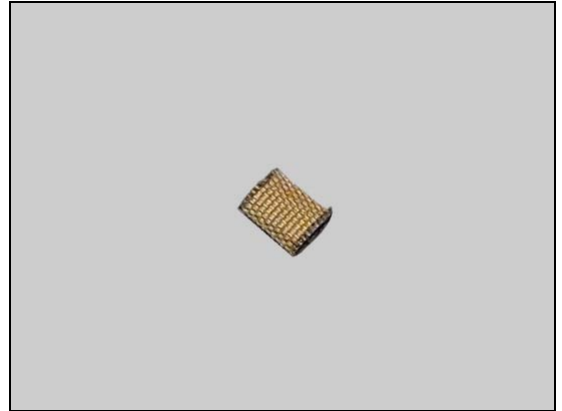
4.18 Cushion Conductive Grounding

Follow the 3.1 – 3.3 Disassembly instructions!
Carry out the Removal as described below.
Prepare a new Cushion Conductive Grounding.
Carry out the Installation as described below.
Follow the 5.5 – 5.7 Reassembly instructions!

REMOVAL

Gently detach the Cushion Conductive Grounding by using a Flex Film Assembly Tool.

Scrap! Not to be reused!

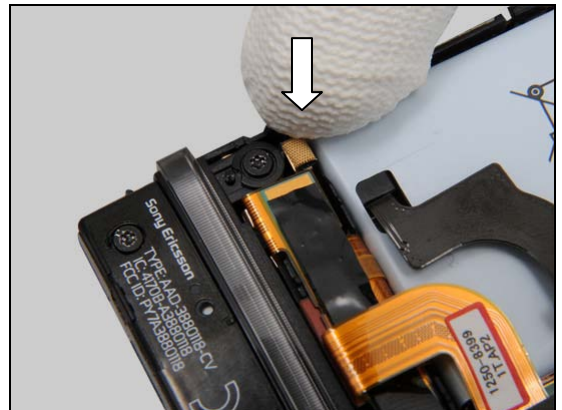


INSTALLATION

Place a new Cushion Conductive Grounding on the golden area as shown.



Press to secure its position and attachment.



Replacement

4.19 Cushion Grounding Pad 1

Follow the 3.1 – 3.3 Disassembly instructions!

Carry out the Removal as described below.

Prepare a new Cushion Grounding Pad 1.

Carry out the Installation as described below.

Follow the 5.5 – 5.7 Reassembly instructions!

The locations of the Cushion Grounding Pad 1 are shown in picture.

Do the same to the other if need!

REMOVAL

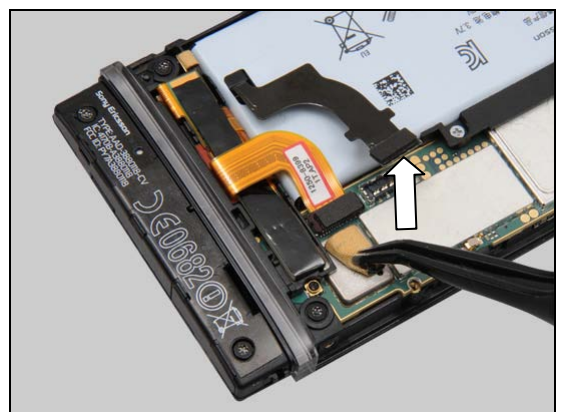
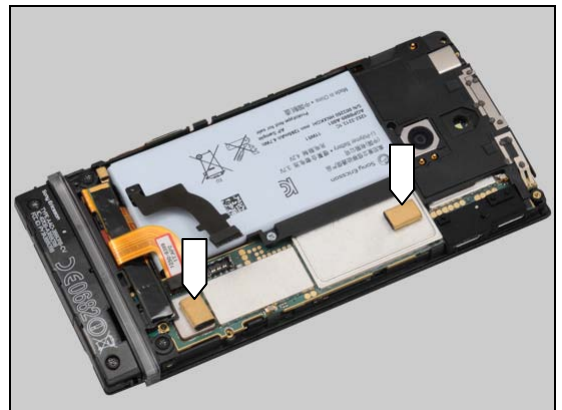
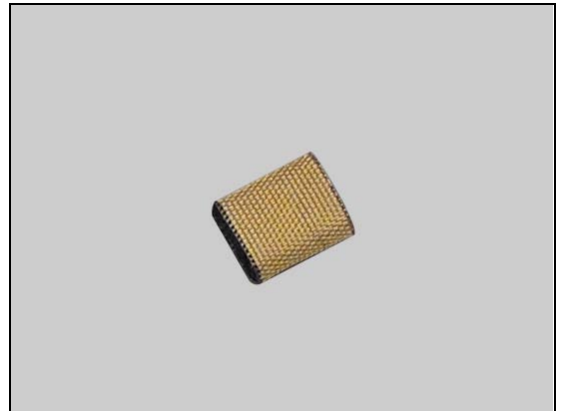
Gently detach the Cushion Grounding Pad 1 by using a Flex Film Assembly Tool.

Scrap! Not to be reused!

Make sure all remains have been removed!

INSTALLATION

Place a new Cushion Grounding Pad 1 on the Main PBA as shown.



Replacement: Cushion Grounding Pad 1

Press to secure its position and attachment.



Replacement

4.20 Cushion Thermal Interface Pad 2

Follow the 3.1 – 3.6 Disassembly instructions!

Carry out the Removal as described below.

Prepare a new Cushion Thermal Interface Pad 2.

Carry out the Installation as described below.

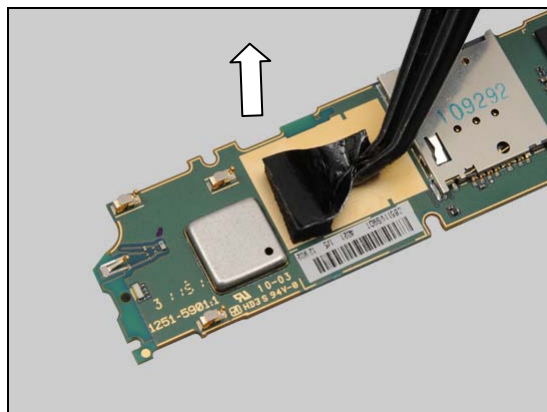
Follow the 5.2 – 5.7 Reassembly instructions!

REMOVAL

Gently detach the Cushion Thermal Interface Pad 2 by using a Flex Film Assembly Tool.

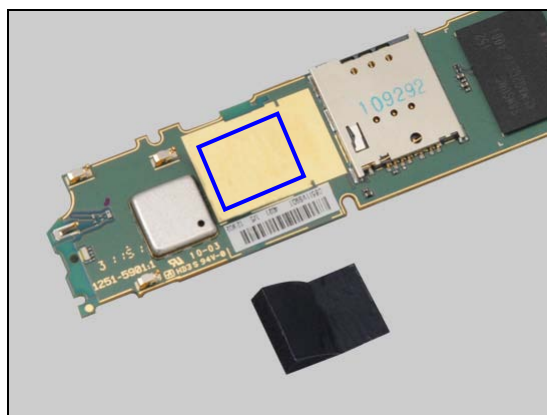
Scrap! Not to be reused!

Make sure all remains have been removed!

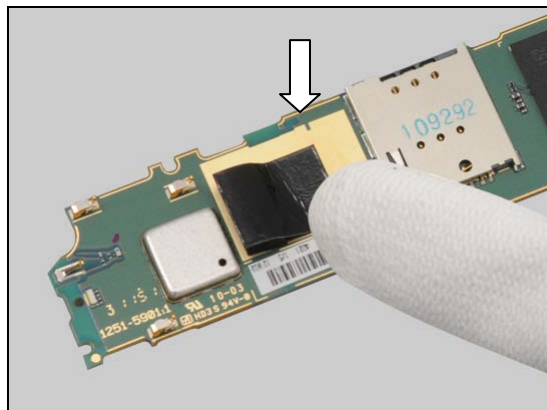


INSTALLATION

Place a new Cushion Thermal Interface Pad 2 as shown.



Press to secure its position and attachment.



Replacement

4.21 Display

Follow the 3.1 – 3.7 Disassembly instructions!

Follow the 4.8, 4.39 and 4.26 Removal instructions!

Carry out the Removal as described below.

Prepare a new Display.

Carry out the Installation as described below.

Follow the 4.8, 4.26 and 4.39 Installation instructions!

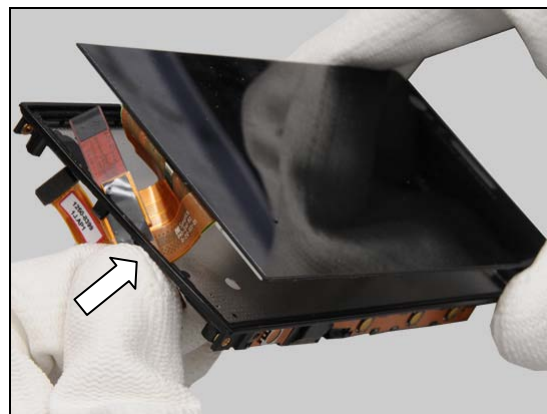
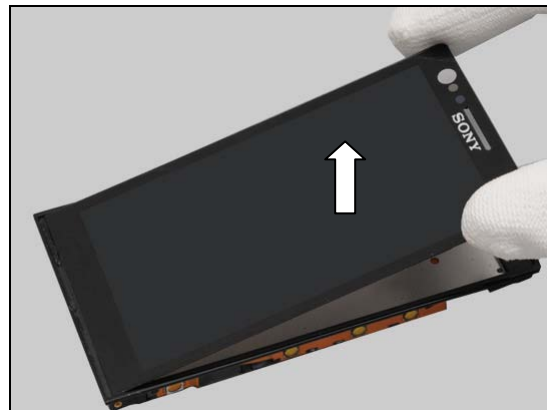
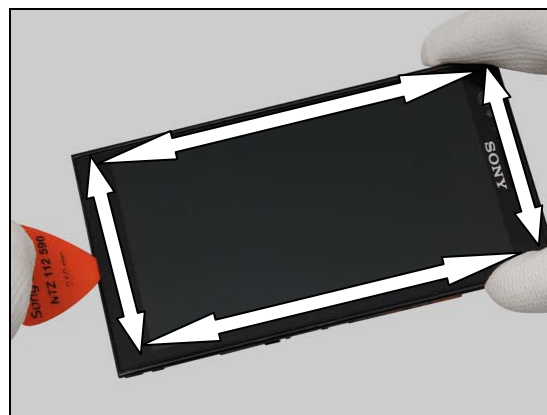
Follow the 5.1 – 5.7 Reassembly instructions!

REMOVAL

Insert a Guitar Pick into the gap between the Display and the Carrier LCD Assembly as shown in picture and gently slide along the sides to release it.

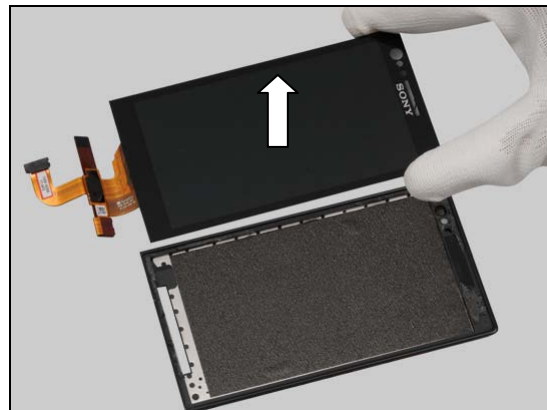
Gently lift up the Display.

Carefully turn the FPC in a slight angle to make it pass through the slot.



Replacement: Display

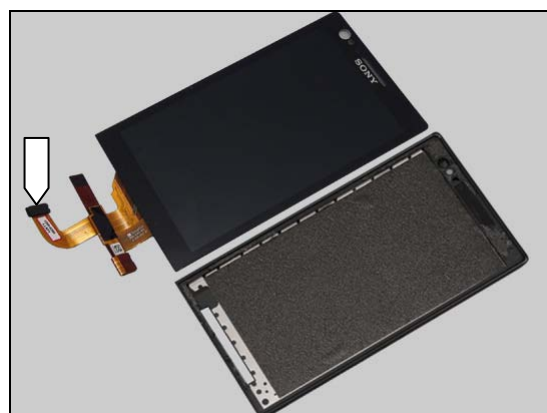
Remove the Display.



INSTALLATION

Prepare a new Display and the Carrier LCD Assembly.

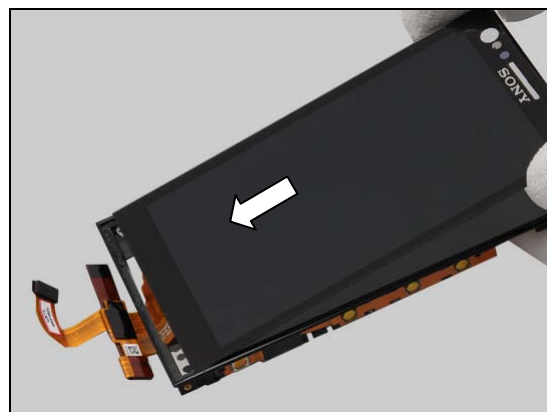
Make sure that the Gasket of the BtB connector is securely attached!



Insert the FPC in a slight angle to make it through the slot.

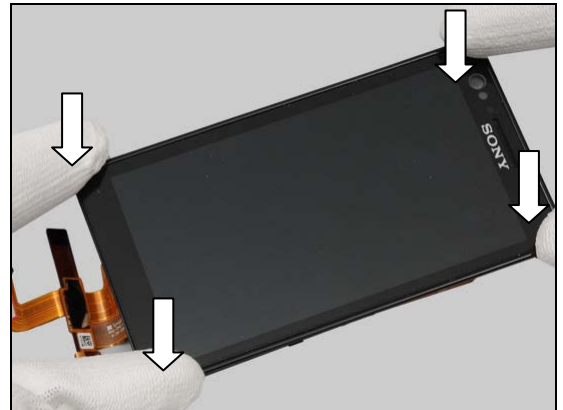


Securely push the bottom side of the Display into the cavity as shown in picture.

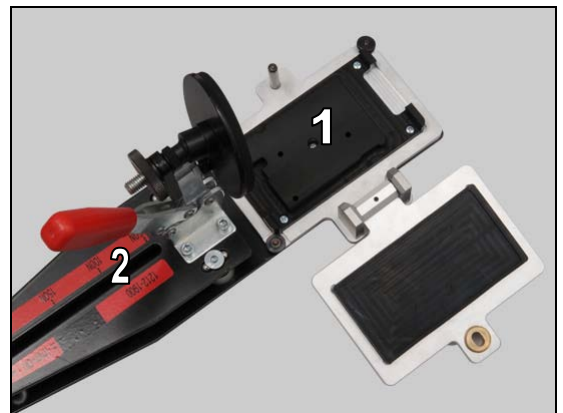


Replacement: Display

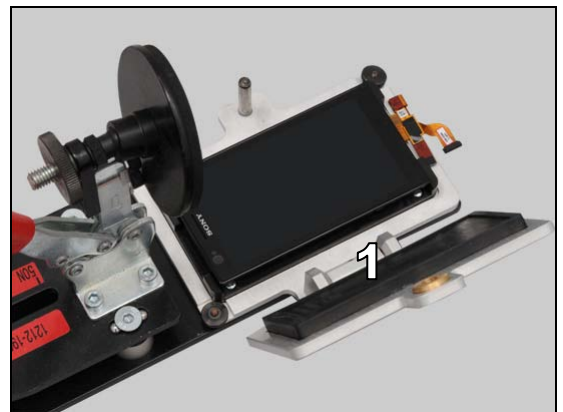
Gently press to secure its position.



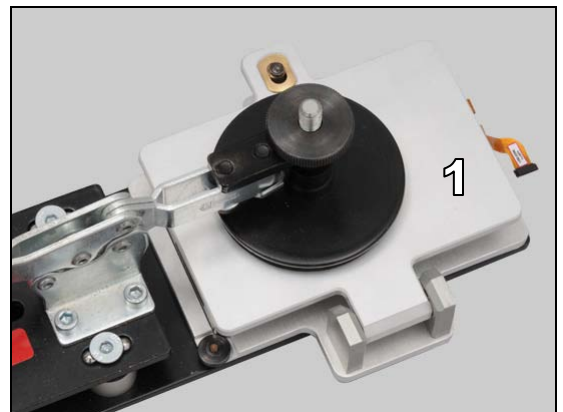
Fasten the LCD Pressure Fixture (1) to the Pressure Tool (2).



Place the Front Cover Assy in the LCD Pressure Fixture (1) as shown.



Fasten the Front Cover Assy in LCD Pressure Fixture (1). Press it with a pressure value of 200N for eight seconds.



Replacement: Display

Make sure its four sides are securely pressed!



Replacement

4.22 Ear Speaker and Gasket Earspeaker

Follow the 3.1 – 3.6 Disassembly instructions!

Carry out the Removal as described below.

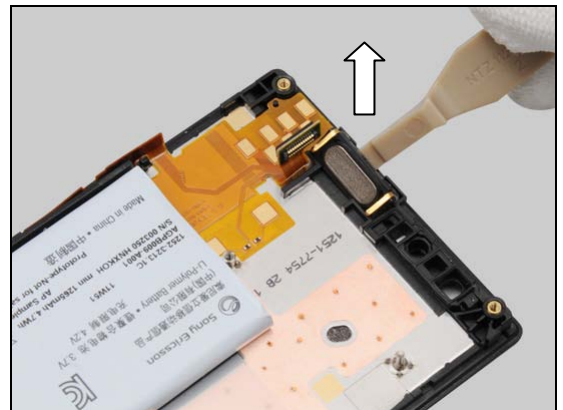
Prepare a new Ear Speaker and a new Gasket Earspeaker.

Carry out the Installation as described below.

Follow the 5.2 – 5.7 Reassembly instructions!

REMOVAL

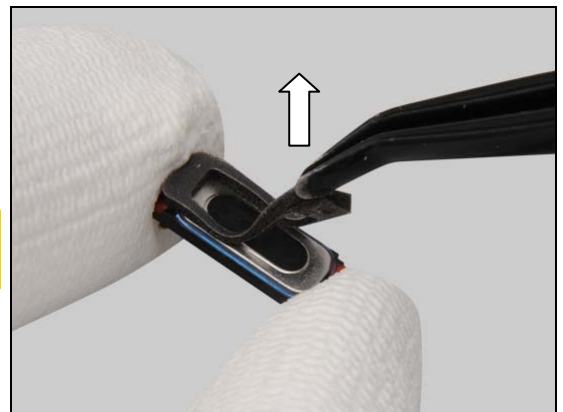
Detach to remove the Ear Speaker by using a Front Opening Tool.



Detach to remove the Gasket Earspeaker by using a Flex Film Assembly Tool.

Scrap! Not to be reused!

Make sure all remains have been removed!



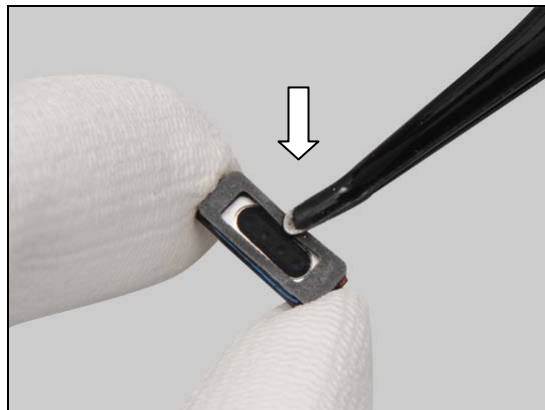
INSTALLATION

Place a new Gasket Earspeaker on a new Ear Speaker.



Replacement: Ear Speaker and Gasket Earspeaker

Press to secure its attachment.

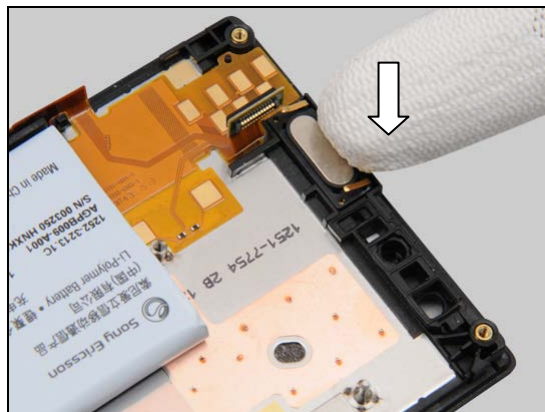


Place it in the cavity.



Press to secure its attachment.

Do not touch the contact pins!



Replacement

4.23 Foil Adhesive Double Side Camera Sealing

Follow the 3.1 – 3.3 Disassembly instructions!

Follow the 4.6 and 4.17 Removal instructions!

Carry out the Removal as described below.

Prepare a new Foil Adhesive Double Side Camera Sealing.

Carry out the Installation as described below.

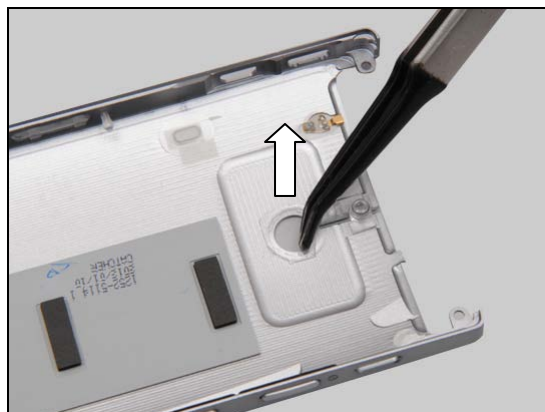
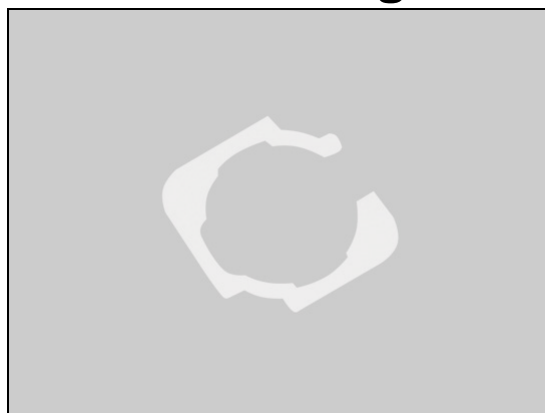
Follow the 4.17 and 4.6 Installation instructions!

Follow the 5.5 – 5.7 Reassembly instructions!

REMOVAL

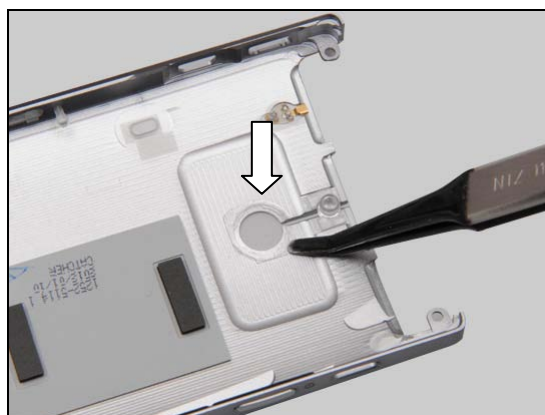
Peel off the Foil Adhesive Double Side Camera Sealing by using a Flex Film Assembly Tool.

Scrap! Not to be reused!



INSTALLATION

Place a new Foil Adhesive Double Side Camera Sealing on the correct position as shown.



Replacement

4.24 Foil Adhesive Double Side Flash Lens

Follow the 3.1 – 3.3 Disassembly instructions!

Follow the 4.42 Removal instructions!

Carry out the Removal as described below.

Prepare a new Foil Adhesive Double Side Flash Lens.

Carry out the Installation as described below.

Follow the 4.42 Installation instructions!

Follow the 5.5 – 5.7 Reassembly instructions!

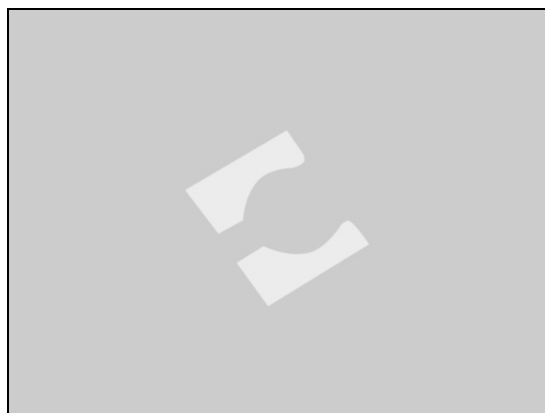
REMOVAL

Peel off the Foil Adhesive Double Side Flash Lens by using a Flex Film Assembly Tool.

Scrap! Not to be reused!

INSTALLATION

Place a new Foil Adhesive Double Side Flash Lens on the correct position.



Replacement

4.25 Foil Adhesive Double Side Flash Silicone

Follow the 3.1 – 3.3 Disassembly instructions!

Carry out the Removal as described below.

Prepare a new Foil Adhesive Double Side Flash Silicone.

Carry out the Installation as described below.

Follow the 5.5 – 5.7 Reassembly instructions!

REMOVAL

Gently detach the corner of the Cover Plastic NFC Slit from the Window Flash Lens as shown in picture.

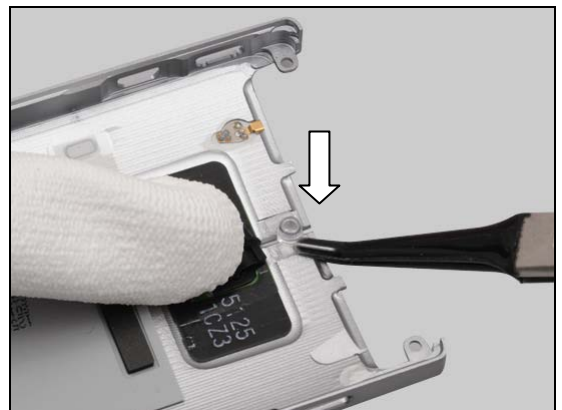
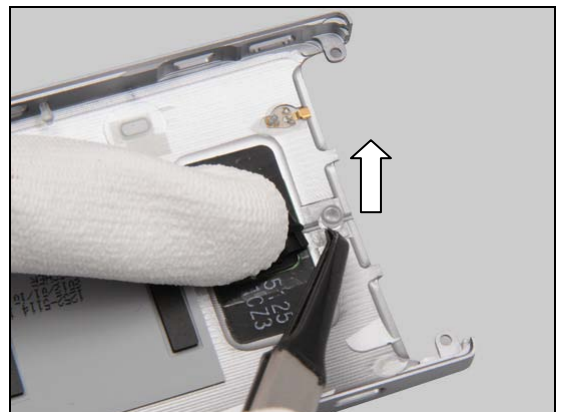
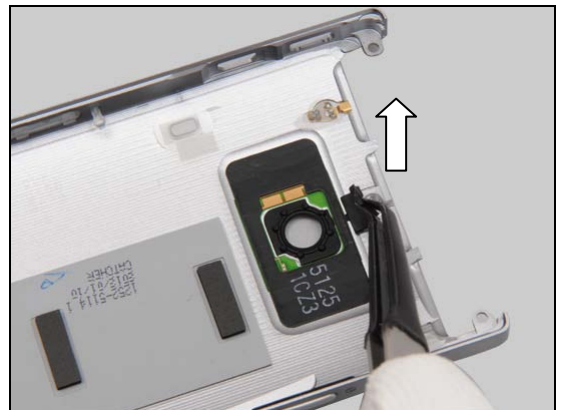
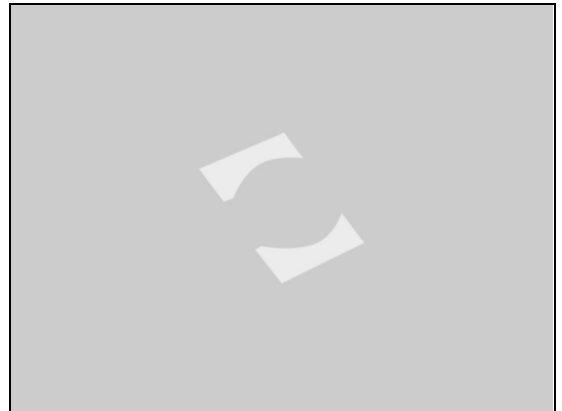
Do not damage the Cover Plastic NFC Slit!

Peel off the Foil Adhesive Double Side Flash Silicone by using a Flex Film Assembly Tool.

Scrap! Not to be reused!

INSTALLATION

Place a new Foil Adhesive Double Side Flash Silicone on the correct position.



Replacement: Foil Adhesive Double Side Flash Silicone

Press the Cover Plastic NFC Slit to make it securely attached.



Replacement

4.26 Foil Adhesive Double Side LCD Flex

Follow the 3.1 – 3.7 Disassembly instructions!

Carry out the Removal as described below.

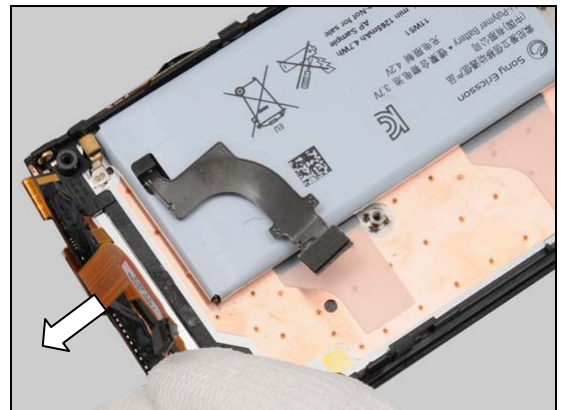
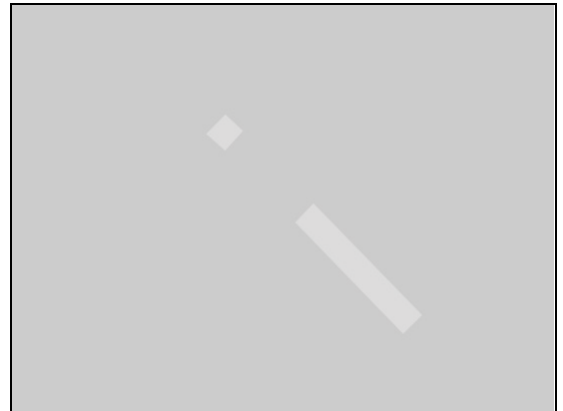
Prepare a new Foil Adhesive Double Side LCD Flex.

Carry out the Installation as described below.

Follow the 5.1 – 5.7 Reassembly instructions!

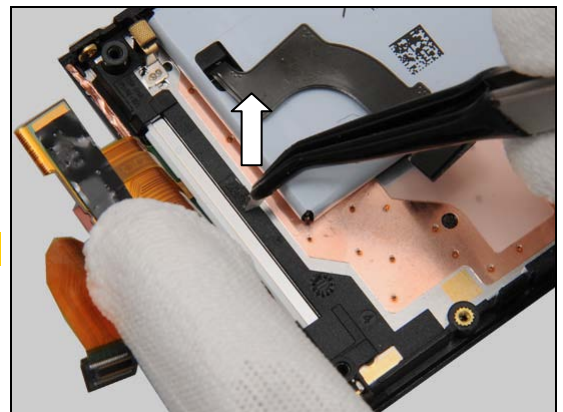
REMOVAL

Detach the FPC from the front unit as shown.



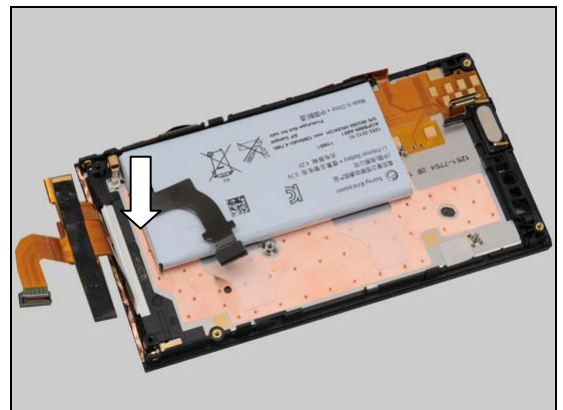
Peel off the Foil Adhesive Double Side LCD Flex by using a Flex Film Assembly Tool.

Scrap! Not to be reused!



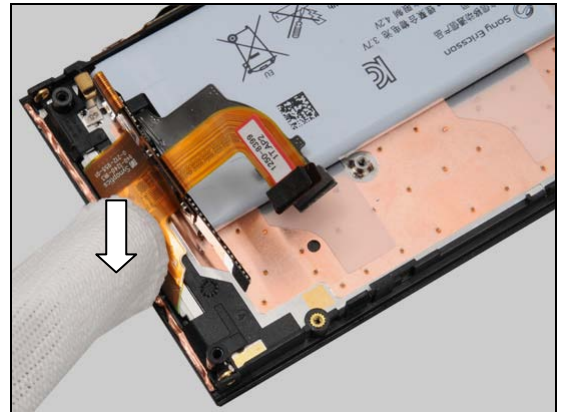
INSTALLATION

Place a new Foil Adhesive Double Side LCD Flex on the correct position.



Replacement: Foil Adhesive Double Side LCD Flex

Press to secure its attachment.



Replacement

4.27 Front Grommet Assembly

Follow the 3.1 – 3.6 Disassembly instructions!

Carry out the Removal as described below.

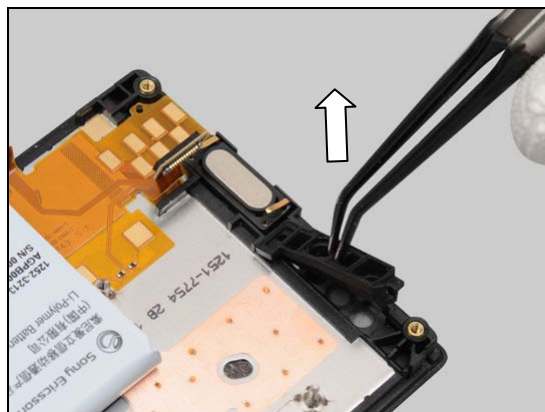
Prepare a new Front Grommet Assembly.

Carry out the Installation as described below.

Follow the 5.2 – 5.7 Reassembly instructions!

REMOVAL

Detach to remove the Front Grommet Assembly by using a Flex Film Assembly Tool.

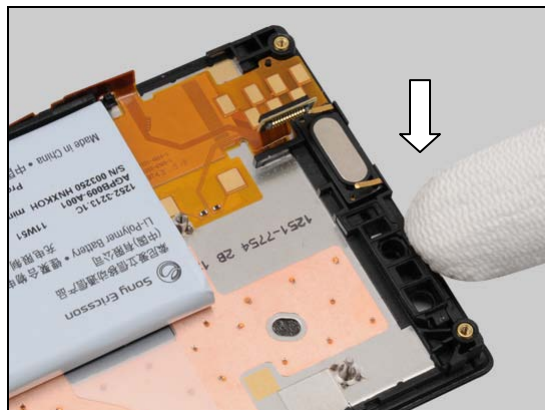


INSTALLATION

Place a new Front Grommet Assembly in the cavity.



Press to secure its position.



Replacement

4.28 Gasket

Follow the 3.1 – 3.4 Disassembly instructions!
 Carry out the Removal as described below.
 Prepare a new Gasket.
 Carry out the Installation as described below.
Follow the 5.4 – 5.7 Reassembly instructions!

The locations of the Cushion Grounding Pad 1 are shown in picture.

Do the same to the others if need!

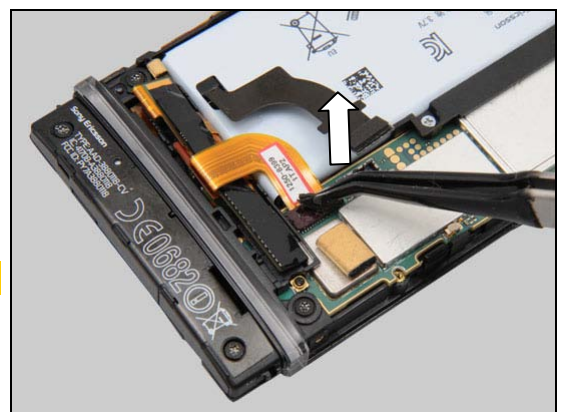
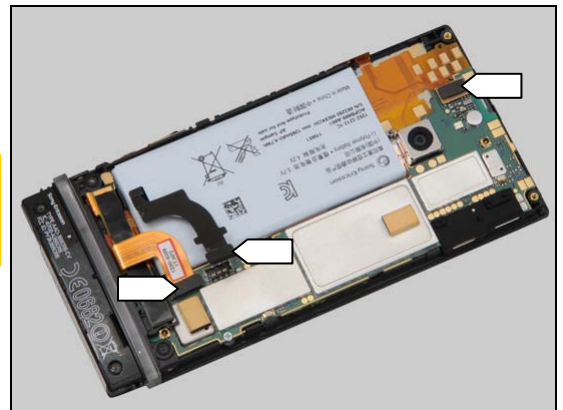
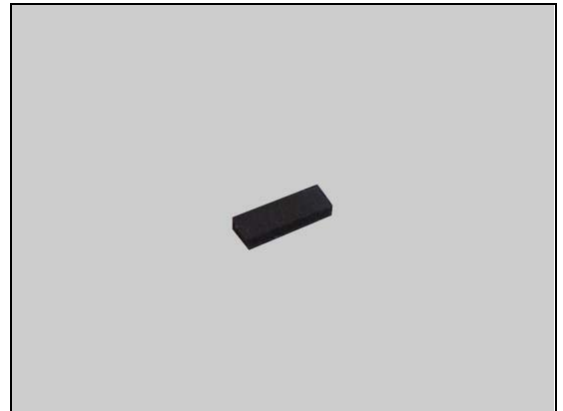
REMOVAL

Detach the Gasket by using a Flex Film Assembly Tool.

Scrap! Not to be reused!

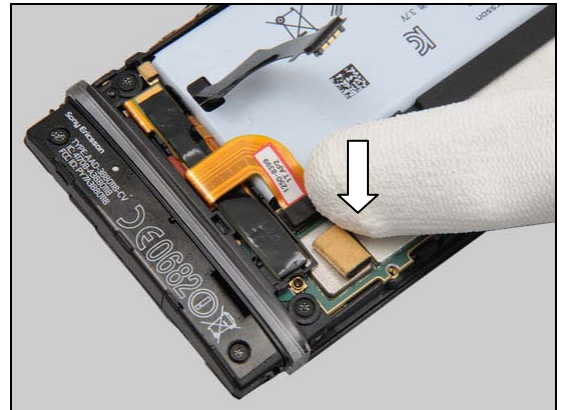
INSTALLATION

Place a new Gasket on the BtB connector.



Replacement: Gasket

Press to secure its attachment.



Replacement

4.29 Gasket HDMI Shield Can

Follow the 3.1 – 3.6 Disassembly instructions!

Carry out the Removal as described below.

Prepare a new Gasket HDMI Shield Can.

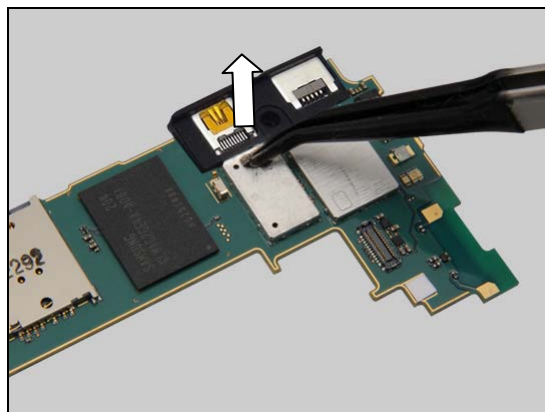
Carry out the Installation as described below.

Follow the 5.2 – 5.7 Reassembly instructions!

REMOVAL

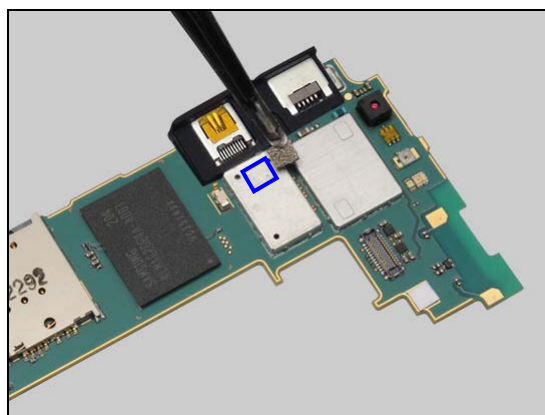
Gently detach to remove the Gasket HDMI Shield Can.

Scrap! Not to be reused!

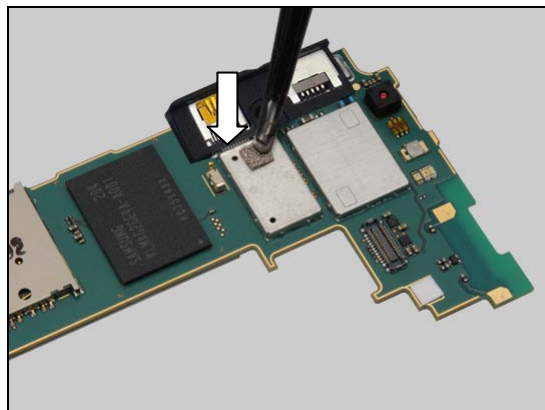


INSTALLATION

Place a new Gasket HDMI Shield Can aligning by the blue rectangle.



Press to secure its attachment.



Replacement

4.30 Gasket LMU Shield Can

Follow the 3.1 – 3.6 Disassembly instructions!

Carry out the Removal as described below.

Prepare a new Gasket LMU Shield Can.

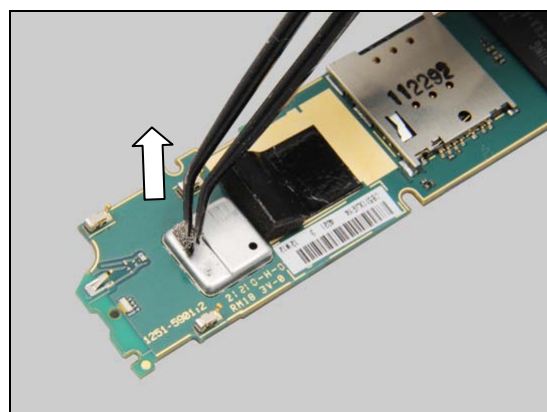
Carry out the Installation as described below.

Follow the 5.2 – 5.7 Reassembly instructions!

REMOVAL

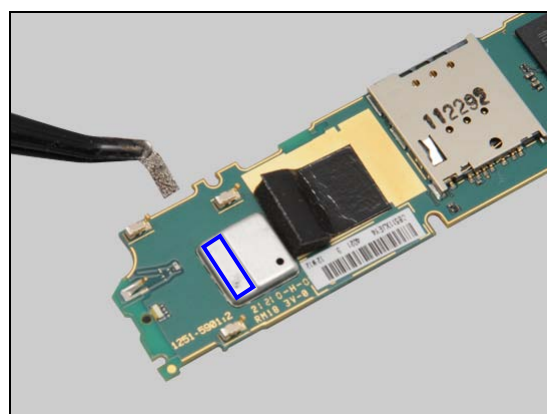
Gently detach to remove the Gasket LMU Shield Can.

Scrap! Not to be reused!

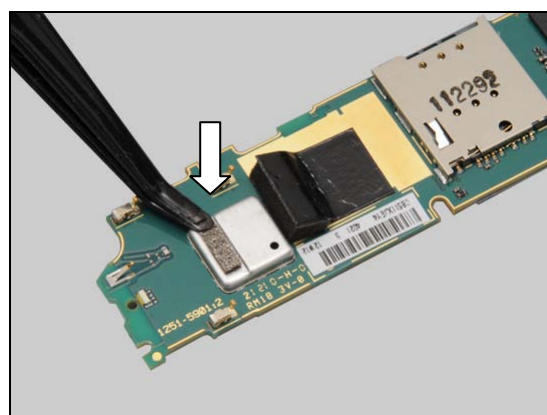


INSTALLATION

Place a new Gasket LMU Shield Can aligning by the blue rectangle.



Press to secure its attachment.



Replacement

4.31 Gasket Loudspeaker

Follow the 3.1 – 3.3 Disassembly instructions!

Carry out the Removal as described below.

Prepare a new Gasket Loudspeaker.

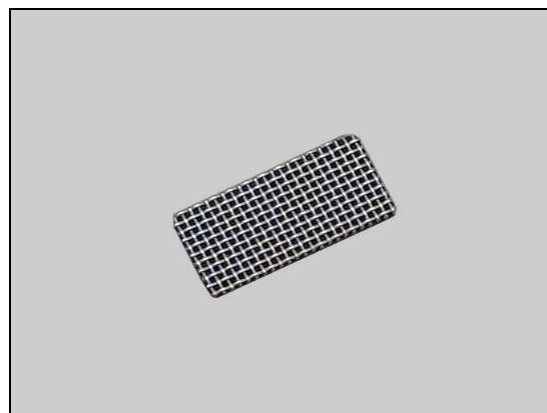
Carry out the Installation as described below.

Follow the 5.5 – 5.7 Reassembly instructions!

REMOVAL

Gently detach to remove the Gasket Loudspeaker.

Scrap! Not to be reused!



INSTALLATION

Place a new Gasket Loudspeaker.



Press to secure its attachment.



Replacement

4.32 Gasket Vibrator

Follow the 3.1 – 3.3 Disassembly instructions!

Follow the 4.11 Removal instructions!

Carry out the Removal as described below.

Prepare a new Gasket Vibrator.

Carry out the Installation as described below.

Follow the 4.11 Installation instructions!

Follow the 5.5 – 5.7 Reassembly instructions!

REMOVAL

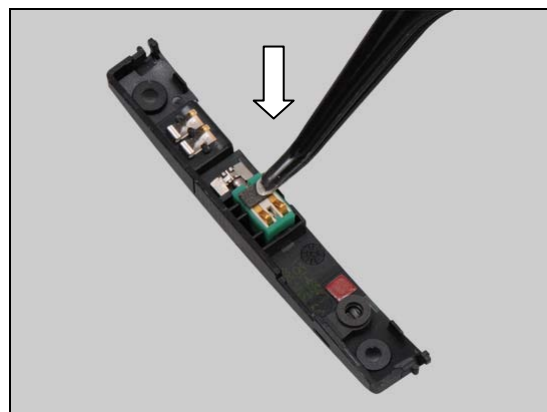
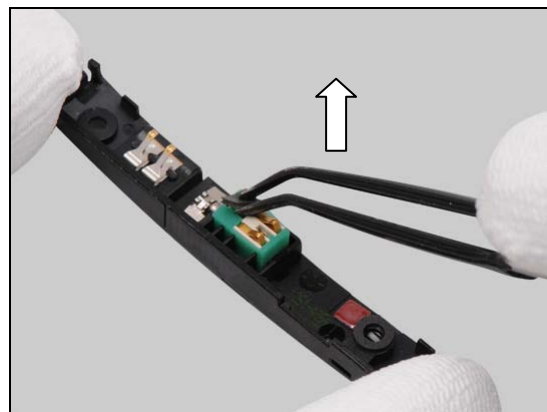
Gently peel off the Gasket Vibrator by using a Flex Film Assembly Tool.

Scrap! Not to be reused!

INSTALLATION

Place a new Gasket Vibrator on the proper position.

Press to secure its position.



Replacement

4.33 Key Camera

Follow the 3.1 – 3.3 Disassembly instructions!

Carry out the Removal as described below.

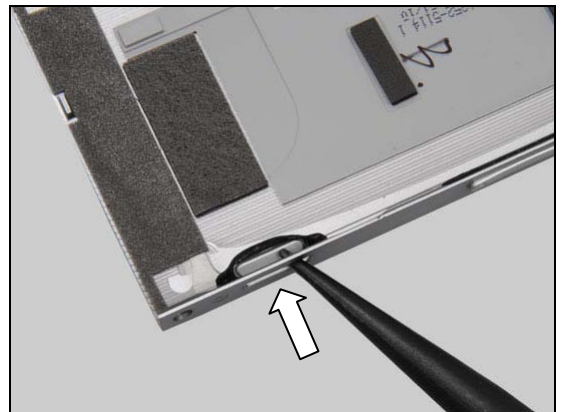
Prepare a new Key Camera.

Carry out the Installation as described below.

Follow the 5.5 – 5.7 Reassembly instructions!

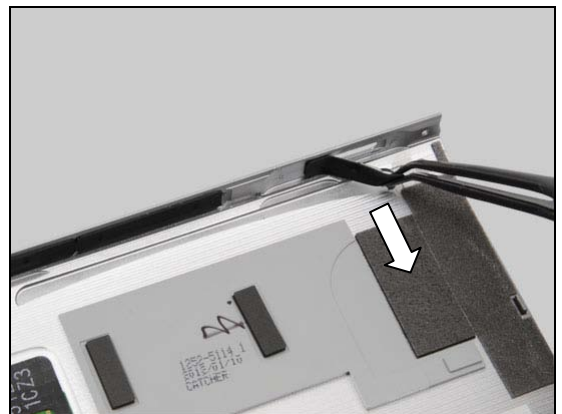
REMOVAL

Push against the Key Camera from the outside of the Cover Rear Metal Assy with a Nylon Pointer.



Detach to remove the Key Camera by using a Flex Film Assembly Tool.

Scrap! Not to be reused!



INSTALLATION

Place a new Key Camera on the proper position as shown.



Replacement: Key Camera

Press back and forth to secure its attachment.



Replacement

4.34 Key Volume / Power

Follow the 3.1 – 3.3 Disassembly instructions!

Carry out the Removal as described below.

Prepare a new Key Volume / Power.

Carry out the Installation as described below.

Follow the 5.5 – 5.7 Reassembly instructions!

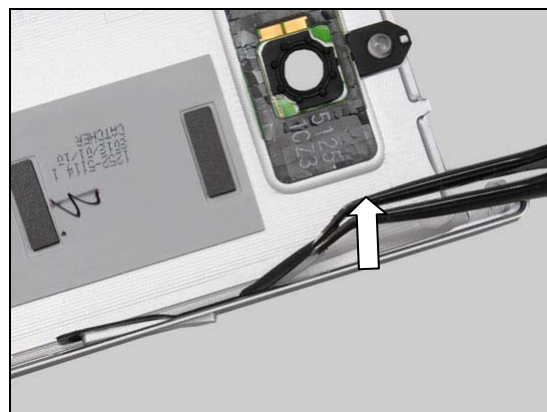
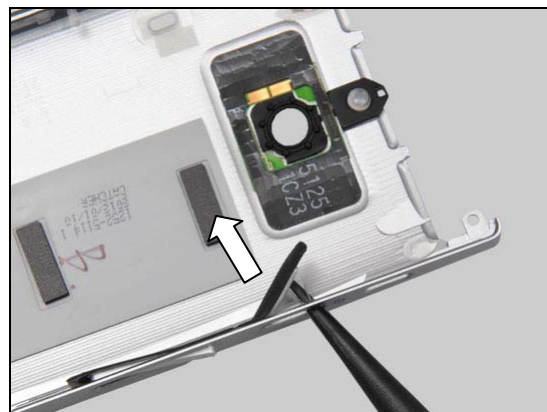
REMOVAL

Gently push against the Key Volume / Power from the outside of the Cover Rear Metal Assy by using a Nylon Pointer.

Do the same to this side as shown.

Remove the Key Volume / Power by using a Flex Film Assembly Tool.

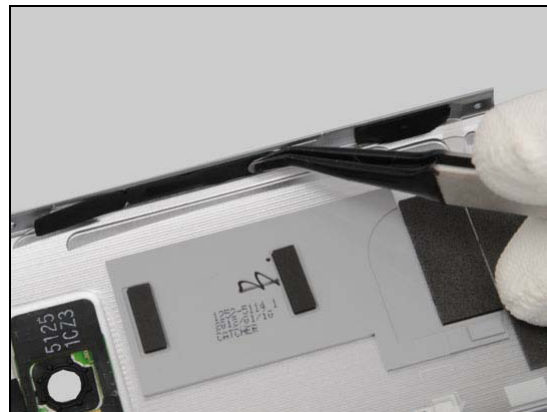
Scrap! Not to be reused!



Replacement: Key Volume / Power

INSTALLATION

Place a new Key Volume / Power on the Cover Rear Metal Assy as shown.



Press back and forth to secure its attachment.



Replacement

4.35 Liquid Indicator

Follow the 3.1 – 3.6 Disassembly instructions!

Carry out the Removal as described below.

Prepare a new Liquid Indicator.

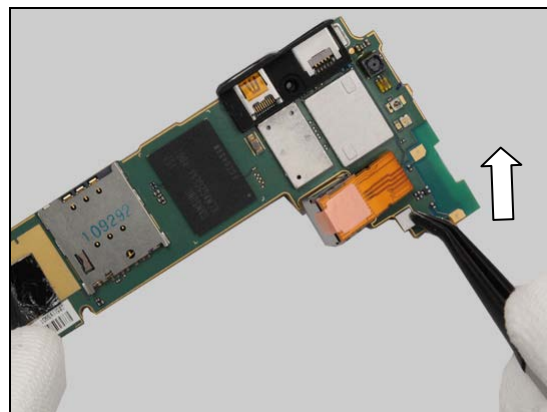
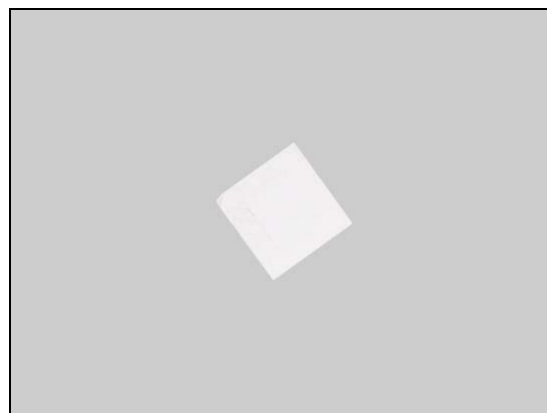
Carry out the Installation as described below.

Follow the 5.2 – 5.7 Reassembly instructions!

REMOVAL

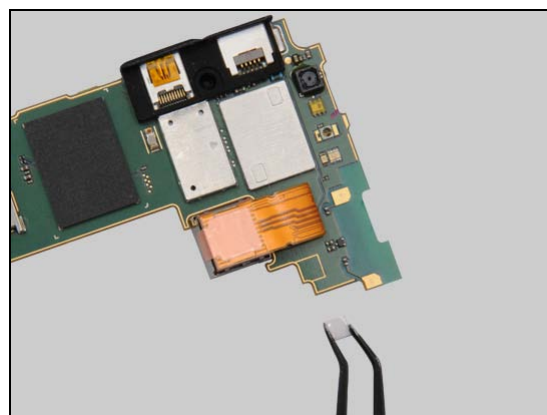
Detach to remove the Liquid Indicator as shown.

Scrap! Not to be reused!

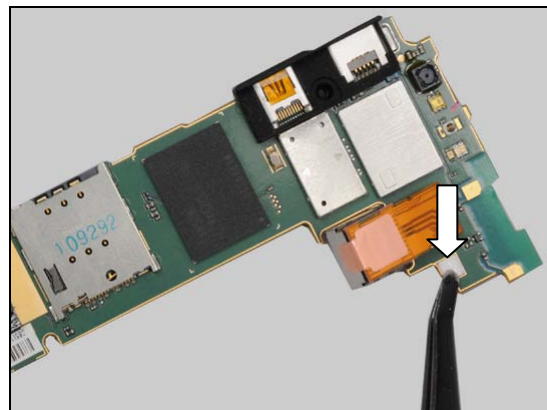


INSTALLATION

Place a new Liquid Indicator as indicated by the golden rectangle.



Press to secure its attachment.



Replacement

4.36 PBA Interconnect Flex

Follow the 3.1 – 3.7 Disassembly instructions!

Carry out the Removal as described below.

Prepare a new PBA Interconnect Flex.

Carry out the Installation as described below.

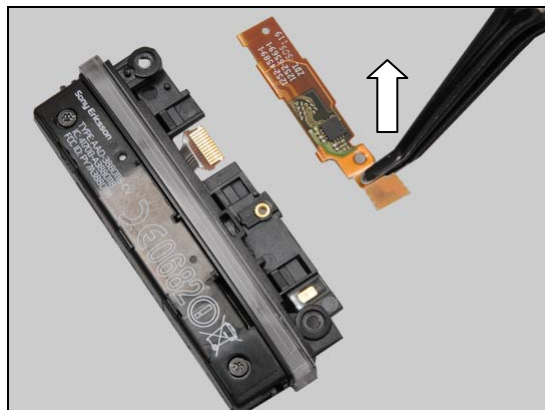
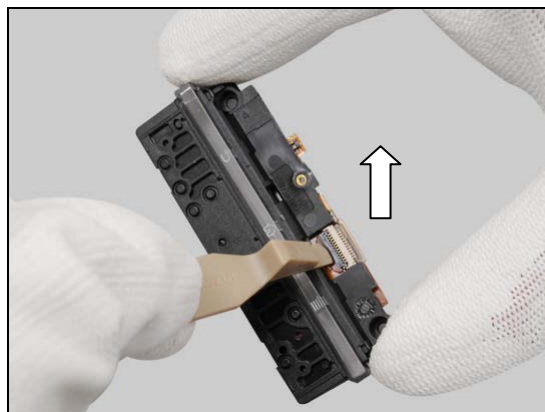
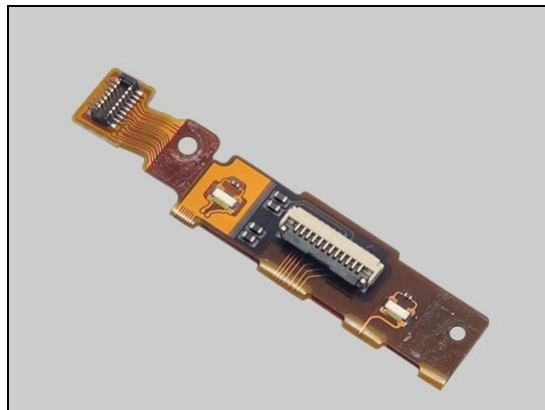
Follow the 5.1 – 5.7 Reassembly instructions!

REMOVAL

Unlock the ZIF connector by using a Front Opening Tool.

Turn the Transparent Belt Assy over and detach to release the PBA Interconnect Flex from the Transparent Belt Assy as shown.

Remove it by using a Flex Film Assembly Tool.



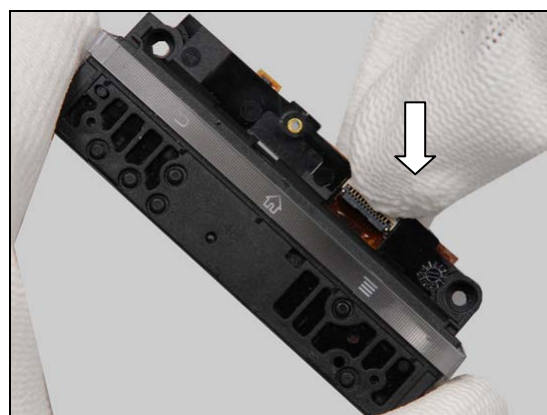
Replacement: PBA Interconnect Flex

INSTALLATION

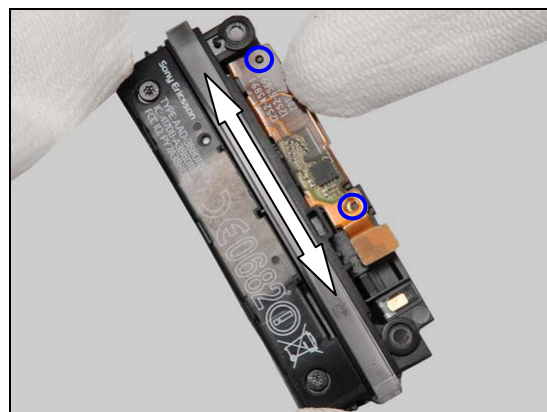
Insert the FPC into the ZIF connector of the PBA Interconnect Flex as shown.



Lock the ZIF connector with finger.



Turn the Transparent Belt Assy over and press along to secure its position as indicated by the guiding hole and the screw hole.



Replacement

4.37 PBA Key flex

Follow the 3.1 – 3.4 Disassembly instructions!

Carry out the Removal as described below.

Prepare a new PBA Key flex.

Follow the 4.28 Installation instructions!

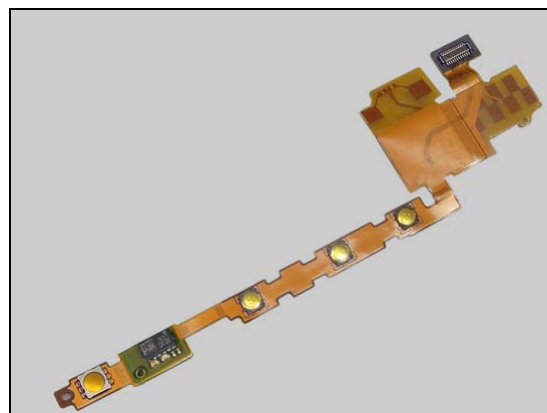
Carry out the Installation as described below.

Follow the 4.14 Installation instructions!

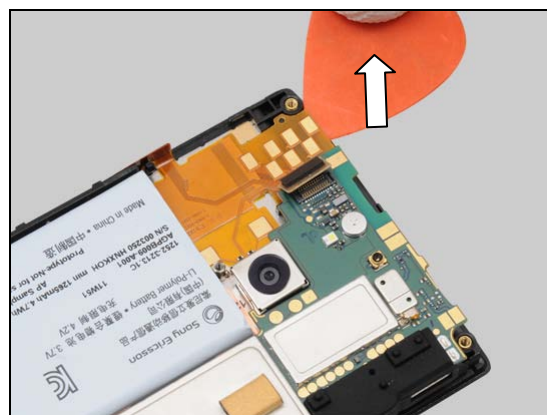
Follow the 5.4 – 5.7 Reassembly instructions!

REMOVAL

Use a Front Opening Tool to disconnect the BtB connector as shown.



Insert a Guitar Pick as shown and gently pull upwards to release the PBA Key flex.



Gently release this side from the Carrier LCD Assembly.



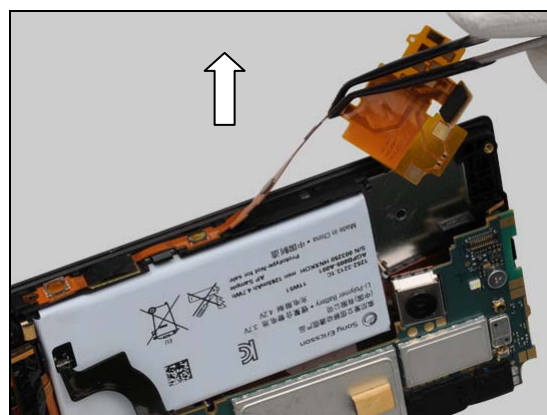
Replacement: PBA Key flex

Lift up the PBA Key flex by using a Flex Film Assembly Tool.



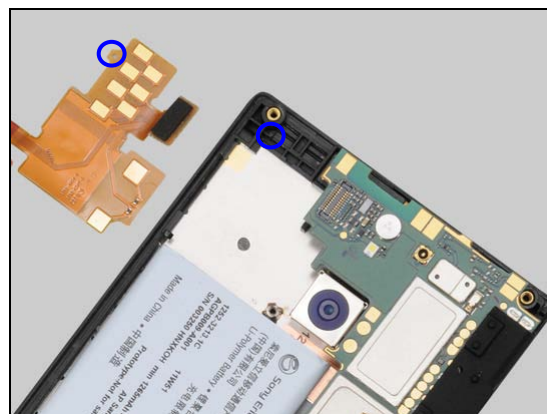
Peel off the PBA Key flex and remove it.

Scrap! Not to be reused!

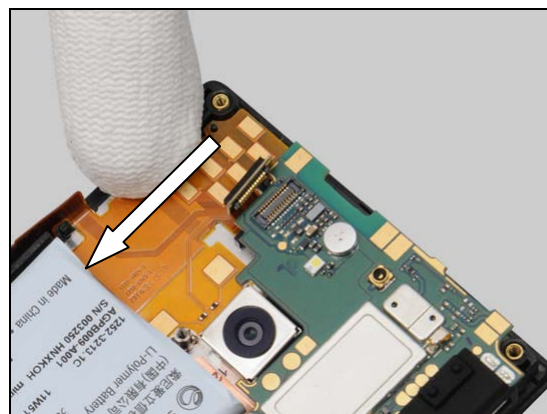


INSTALLATION

Place a new PBA Key flex on the Carrier LCD Assembly as indicated by the peg and hole.

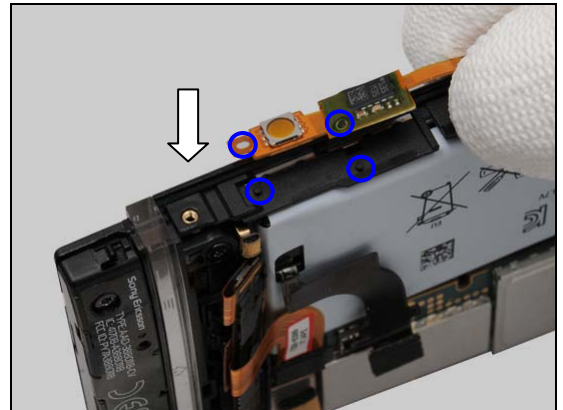


Press along to secure its attachment.

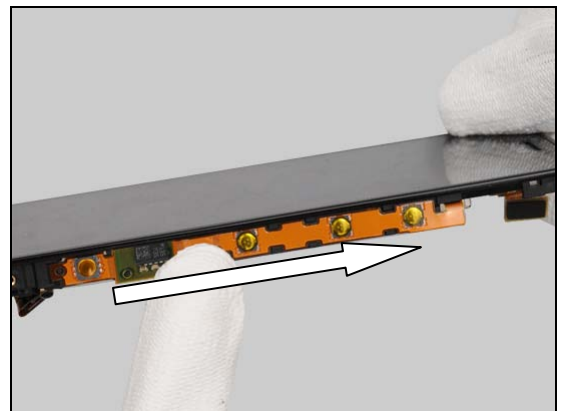


Replacement: PBA Key flex

Turn the front unit over and align the PBA Key flex as indicated by the pegs and holes.

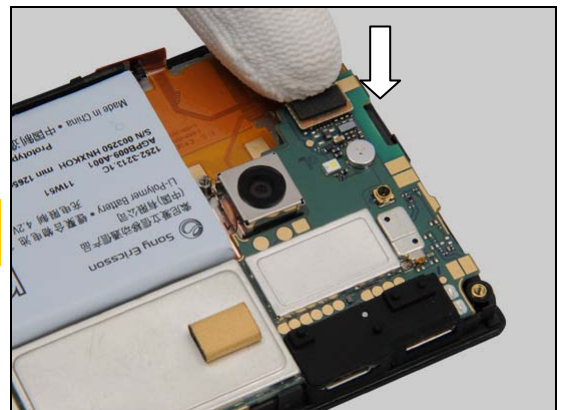


Press along to make it securely attached as shown.



Snap the BtB connector on the top side of the Main PBA.

Make sure that the Gasket on the BtB connector is securely attached!



Replacement

4.38 PBA Microphone flex

Follow the 3.1 – 3.3 Disassembly instructions!

Follow the 4.16 and 4.11 Removal instructions!

Carry out the Removal as described below.

Prepare a new PBA Microphone flex.

Carry out the Installation as described below.

Follow the 4.11 and 4.16 Installation instructions!

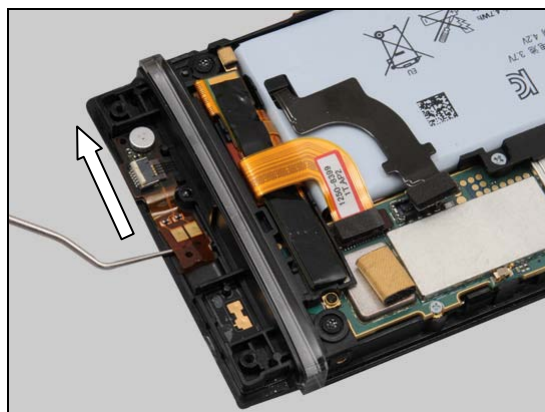
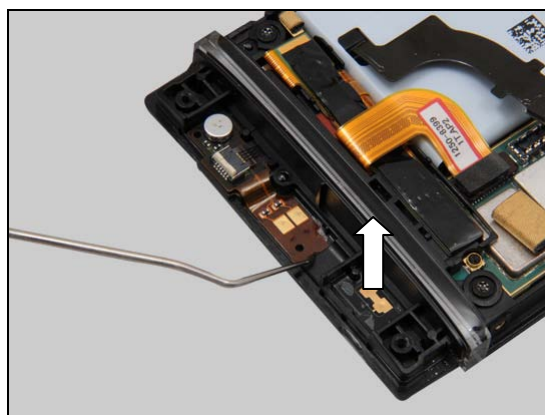
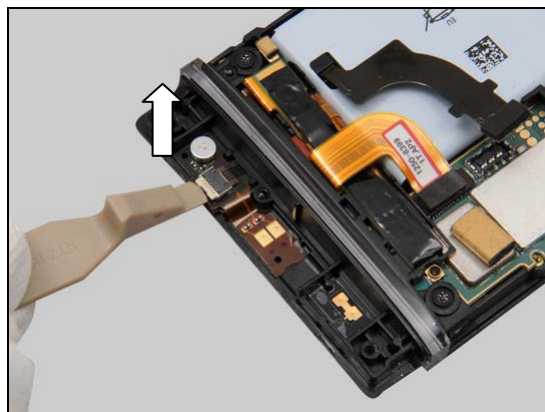
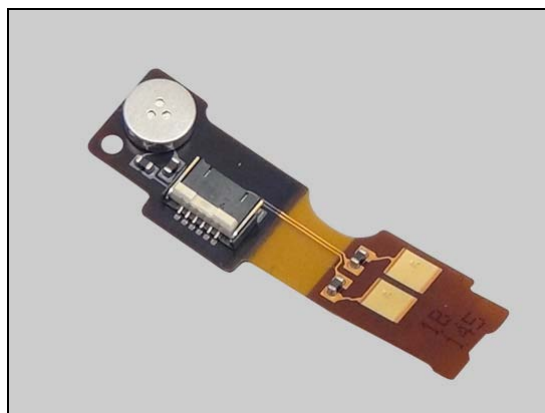
Follow the 5.5 – 5.7 Reassembly instructions!

REMOVAL

Unlock the ZIF connector by using a Front Opening Tool.

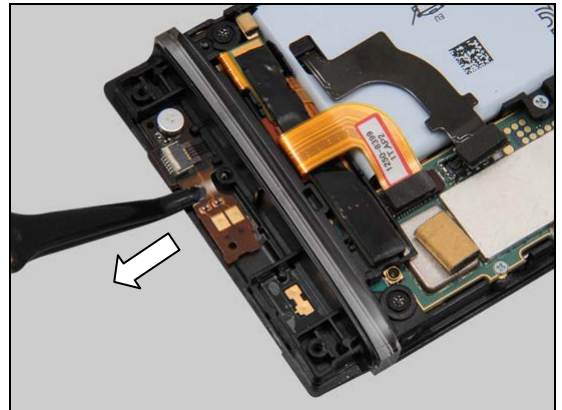
Insert a Dentist Hook into the gap as shown in picture.

Gently slide along to release the PBA Microphone flex.



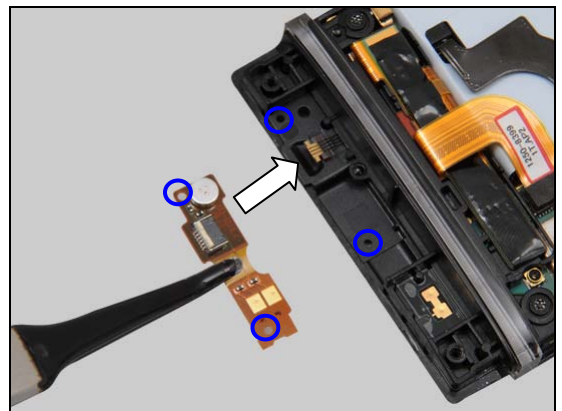
Replacement: PBA Interconnect Flex

Remove it by using a Flex Film Assembly Tool.

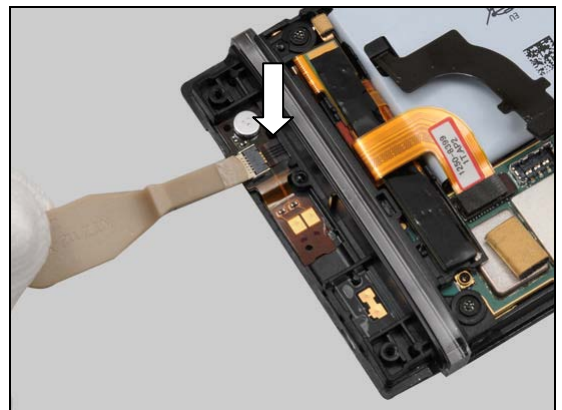


INSTALLATION

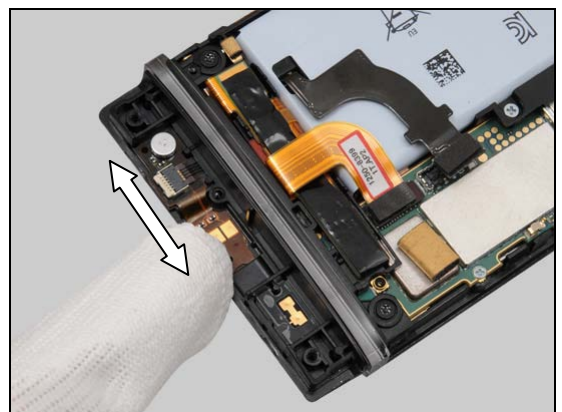
Insert the FPC into the ZIF connector of the PBA Microphone flex and securely place it on the Transparent Belt Assembly as indicated by the blue circles.



Lock the ZIF connector.



Press along to secure its attachment.



Replacement

4.39 Touch Flex Shielding

Note! Only apply for revision 3 of PBA!

Follow the 3.1 – 3.3 Disassembly instructions!

Carry out the Removal as described below.

Prepare a new Touch Flex Shielding.

Carry out the Installation as described below.

Follow the 5.5 – 5.7 Reassembly instructions!

REMOVAL

Disconnect the BtB connector by using a Front Opening Tool.

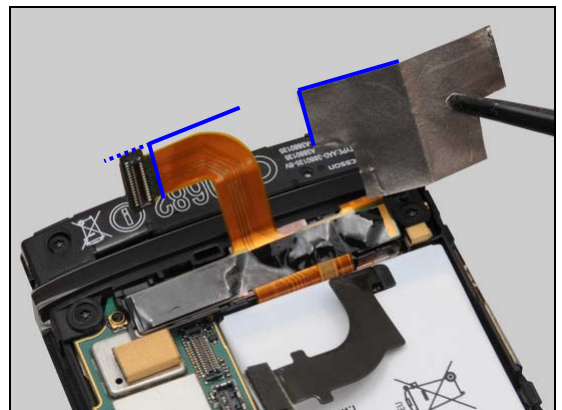
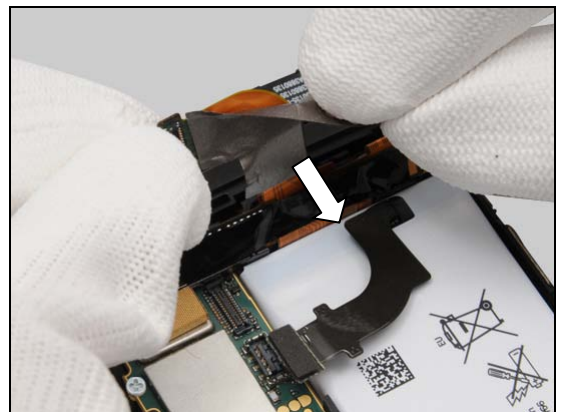
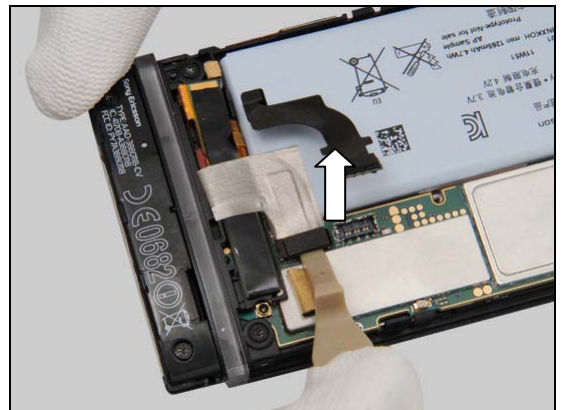
Carefully peel off the Touch Flex Shielding with fingers.

Do not damage the touch panel FPC!

Scrap! Not to be reused!

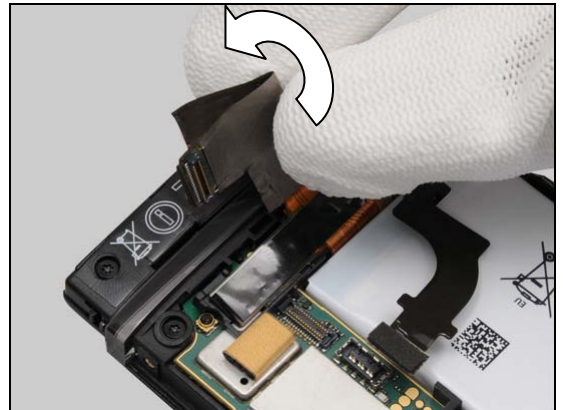
INSTALLATION

Attach a new Touch Flex Shielding on the touch panel FPC as indicated by the blue lines.

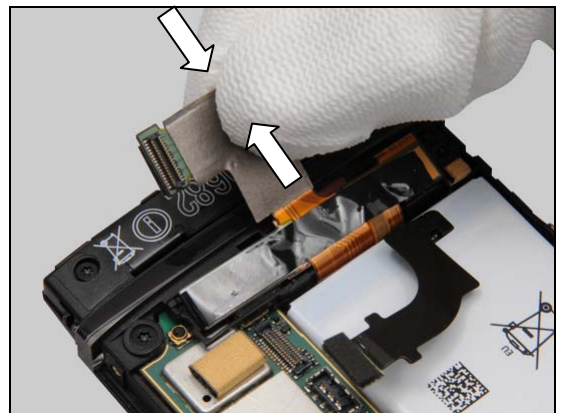


Replacement: Touch Flex Shielding

Turn it over.



Press along to secure its attachment and position.



Make sure it is securely attached as shown!



Replacement

4.40 Vibrator

Follow the 3.1 – 3.3 Disassembly instructions!

Follow the 4.11 Removal instructions!

Carry out the Removal as described below.

Prepare a new Vibrator.

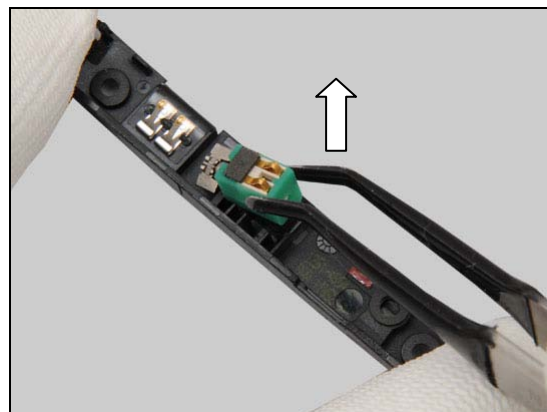
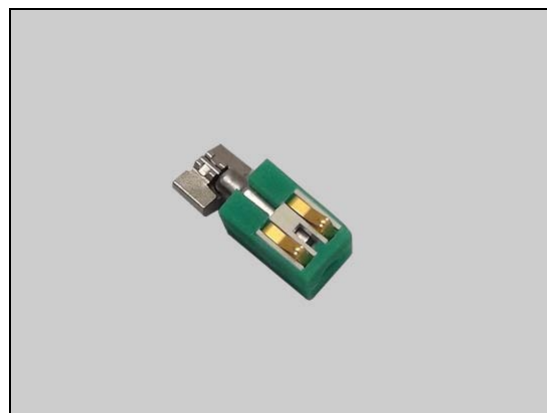
Carry out the Installation as described below.

Follow the 4.32 and 4.11 Installation instructions!

Follow the 5.5 – 5.7 Reassembly instructions!

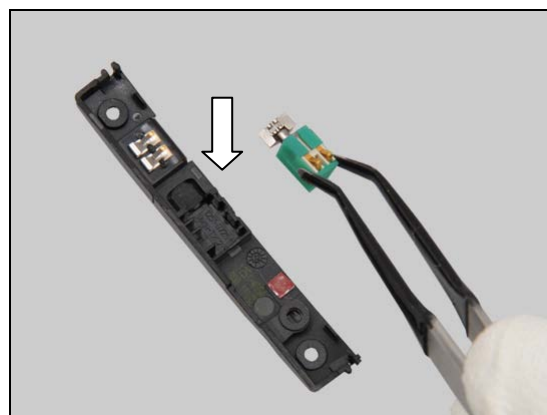
REMOVAL

Lift up to remove the Vibrator from its cavity By using a Flex Film Assembly Tool.

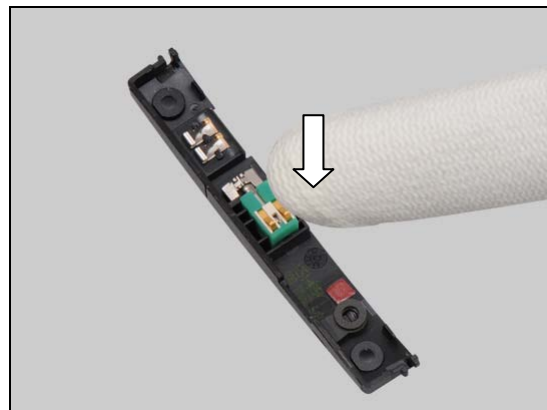


INSTALLATION

Place a new Vibrator into its cavity.



Press to secure its position.



Replacement

4.41 Water Indicator 3x3

Follow the 3.1 – 3.3 Disassembly instructions!

Follow the 4.11 Removal instructions!

Carry out the Removal as described below.

Prepare a new Water Indicator 3x3.

Carry out the Installation as described below.

Follow the 4.11 Installation instructions!

Follow the 5.5 – 5.7 Reassembly instructions!

REMOVAL

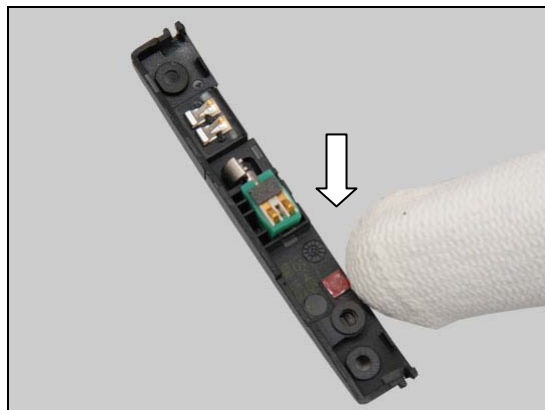
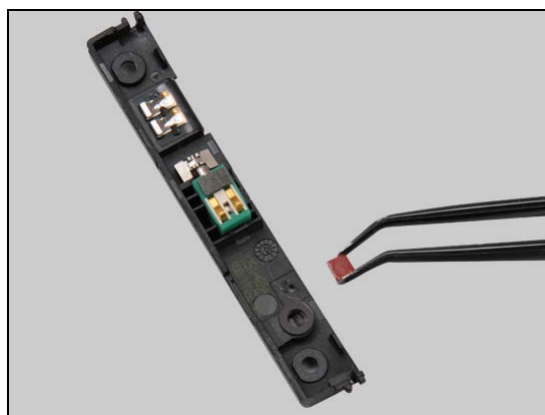
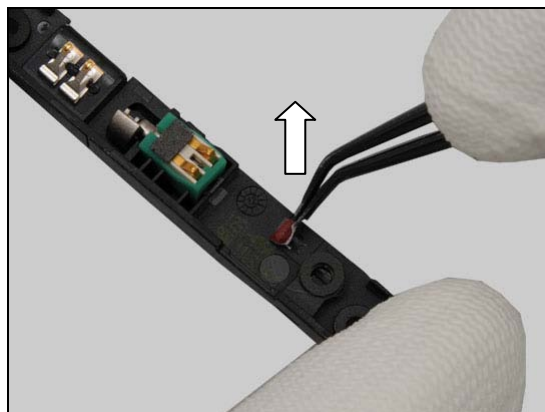
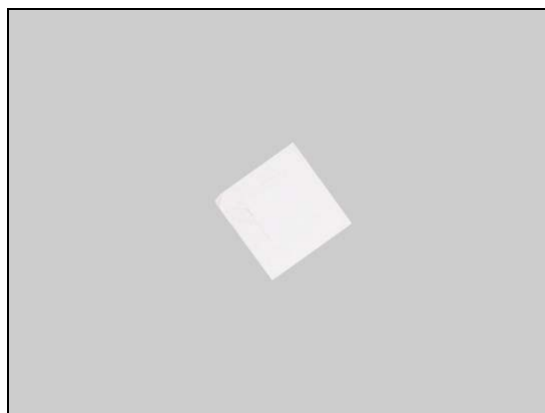
Gently detach to remove the Water Indicator 3x3 By using a Flex Film Assembly Tool.

Scrap! Not to be reused!

INSTALLATION

Place a new Water Indicator 3x3 on the proper position.

Press to secure its position.



Replacement

4.42 Window Flash Lens

Follow the 3.1 – 3.3 Disassembly instructions!

Carry out the Removal as described below.

Follow the 4.24 Removal and Installation instructions!

Prepare a new Window Flash Lens.

Carry out the Installation as described below.

Follow the 4.25 Installation instructions!

Follow the 5.5 – 5.7 Reassembly instructions!

REMOVAL

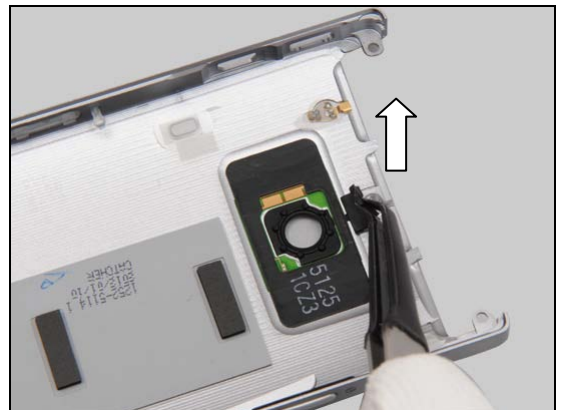
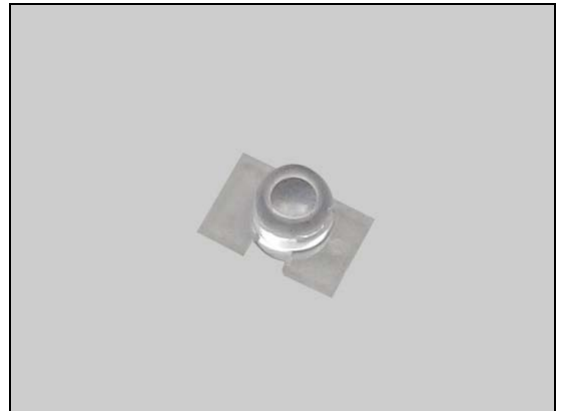
Gently detach the corner of the Cover Plastic NFC Slit from the Window Flash Lens as shown in picture.

Do not damage the Cover Plastic NFC Slit!

Push against the Window Flash Lens from the back side to remove it by using a Nylon Pointer.

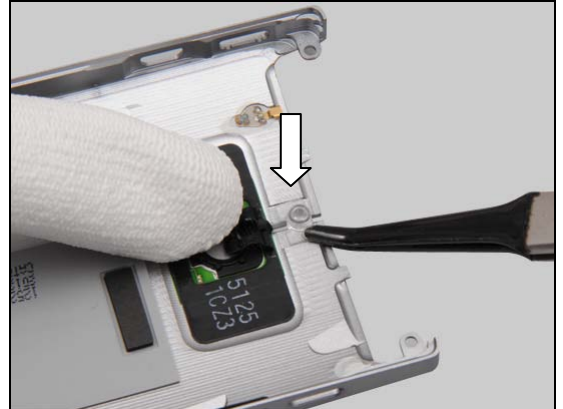
INSTALLATION

Place a new Window Flash Lens in the cavity as shown.



Replacement: Window Flash Lens

Press to secure its attachment.



Replacement

4.43 Board Swap - Replacement

Make sure that the Touch Flex Shielding is properly mounted, if replace a revision 3 of PBA!

Follow the 3.1 – 3.6 Disassembly instructions!

Follow the 4.9 and 4.15 Removal instructions!

Replace the Swap Board.

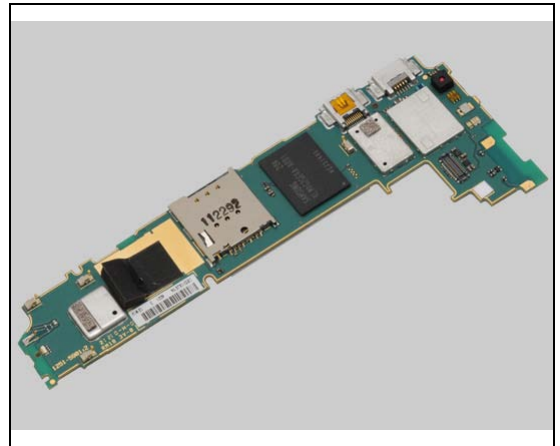
Reuse the camera

Follow the 4.9, 4.15, 4.19, 4.20, 4.29, 4.30 and 4.35

Installation instructions!

Follow the 5.2 – 5.7 Reassembly instructions!

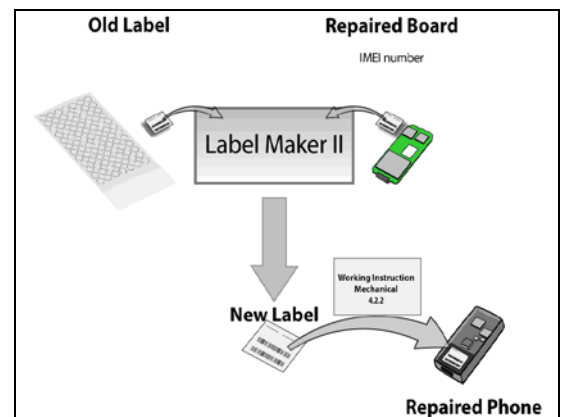
Startup the unit to initialize settings, before performing
Customize Phone in Emma



4.44 Board Swap – Change Label

CHANGE LABEL

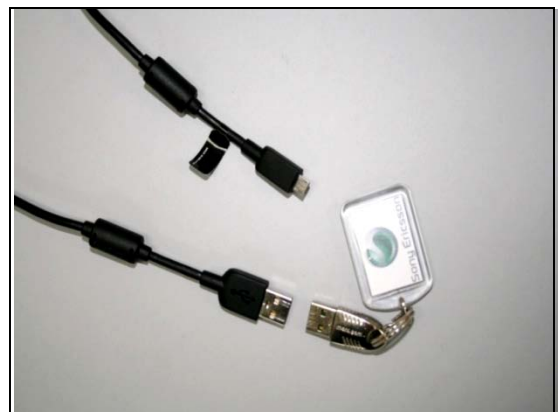
Follow the instructions in the Generic Repair Manual –
Build swap for change of label.



4.45 Board Swap – Customize of Software

CUSTOMIZE OF SOFTWARE

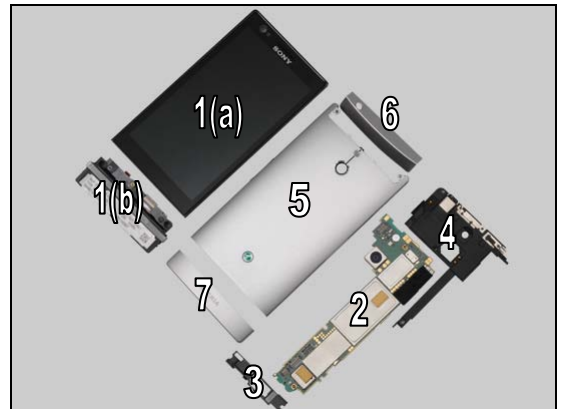
*Follow the instructions in the Generic Repair Manual –
Build swap for customization of the software.*



5 Reassembly

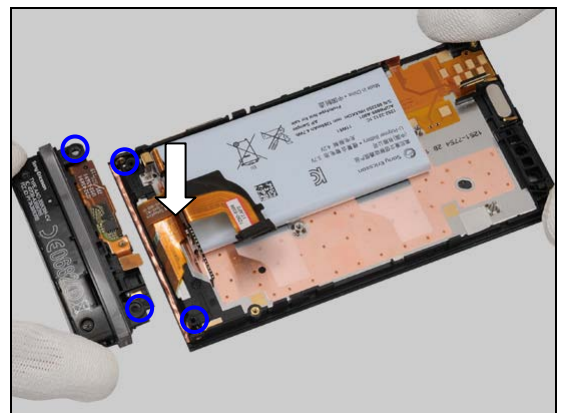
The reassembly is done in the following order:

1. Front Cover Assy (a) & Transparent Belt Assembly (b)
2. Main PBA
3. Carrier LCD Flex Support Assembly
4. Carrier Internal Frame Assembly
5. Cover Rear Metal Assy
6. Cap Top Assembly
7. Cap Cosmetic cap assy

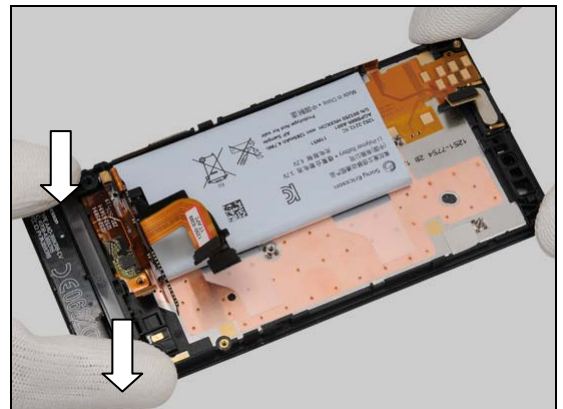


5.1 Front Cover Assy & Transparent Belt Assembly

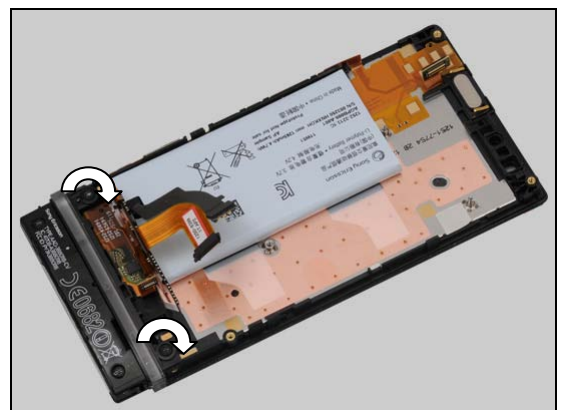
Place the Transparent Belt Assembly onto the Front Cover Assy and align it by the two screw holes.



Press to secure its position.



Apply 22 Ncm torque when tightening the two screws with Bits (T5).



Reassembly

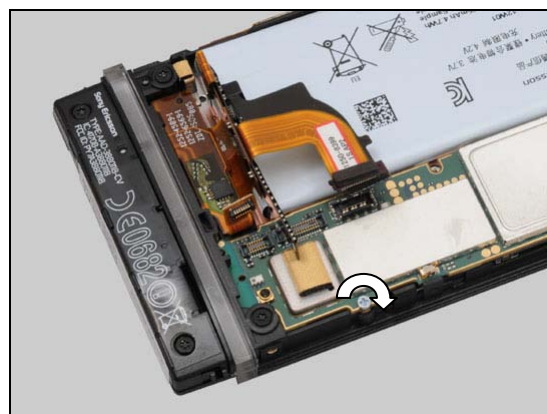
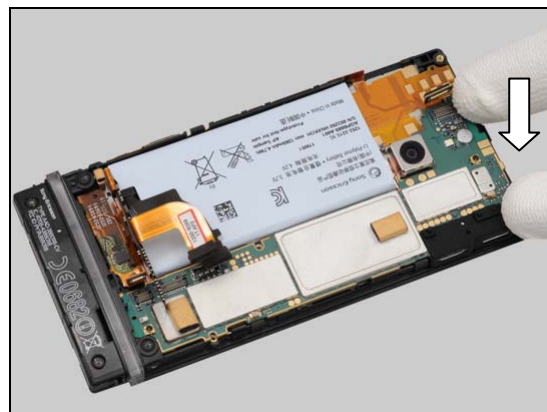
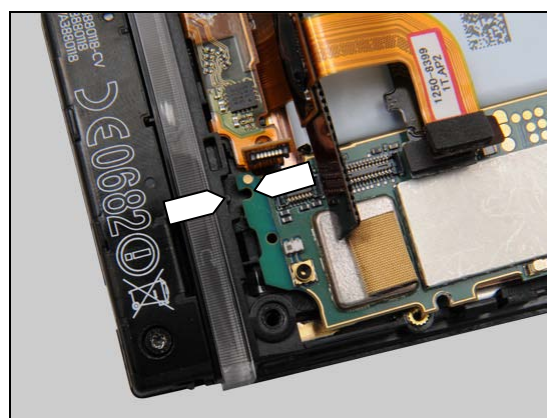
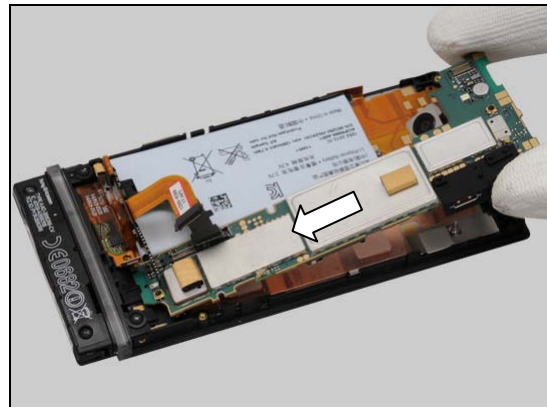
5.2 Main PBA

Hold the Main PBA at approximately 30 degree and insert it at the bottom into the cavity.

Securely insert the hole of the Main PBA into the peg as indicated by the pointers.

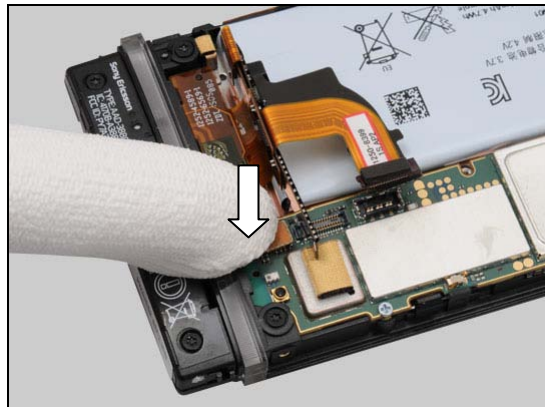
Press the top side of the Main PBA to its proper position.

Apply 8 Ncm torque when tightening the screw with Bits (JCIS No 0).

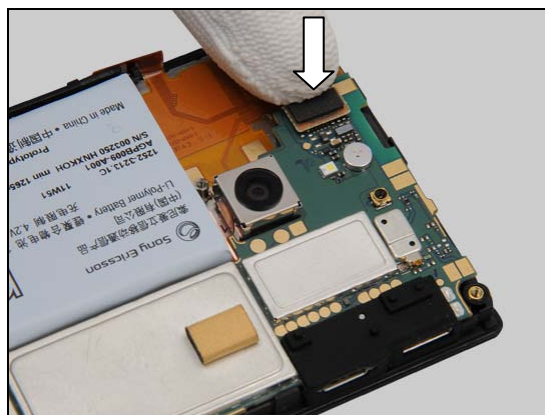


Reassembly

Snap the BtB connector with finger.

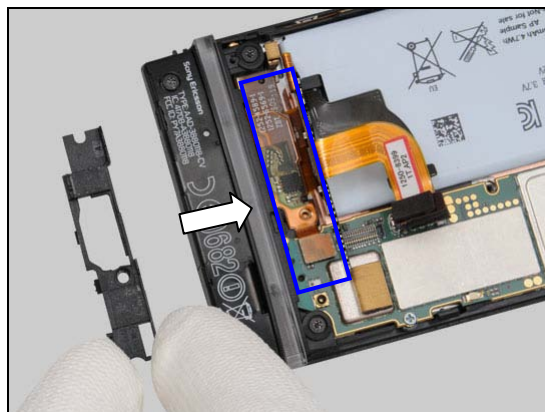


Snap the BtB connector on the top side of the Main PBA.

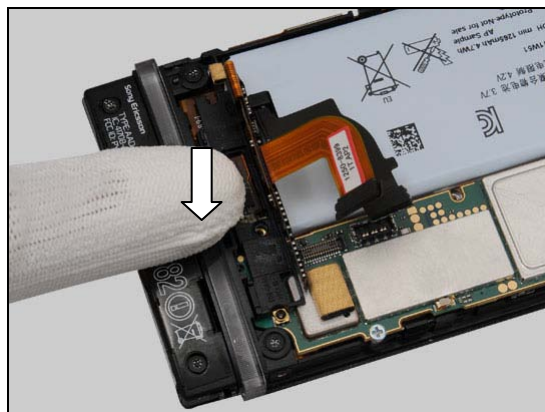


5.3 Carrier LCD Flex Support Assembly

Place the Carrier LCD Flex Support Assembly on the proper position as shown.

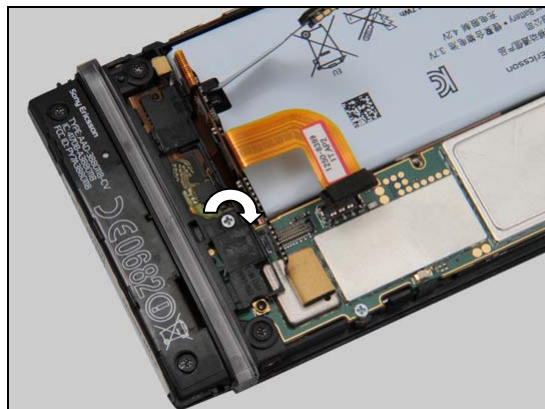


Push it into the cavity as shown in picture.

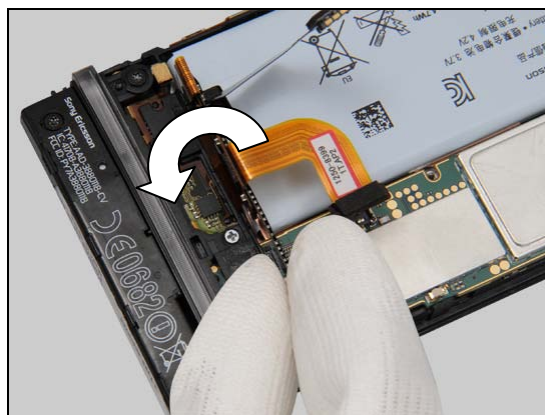


Reassembly

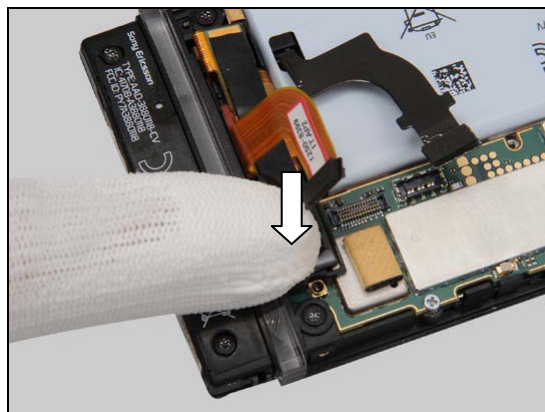
Apply 8 Ncm torque when tightening the screw with Bits (JCIS No 0).



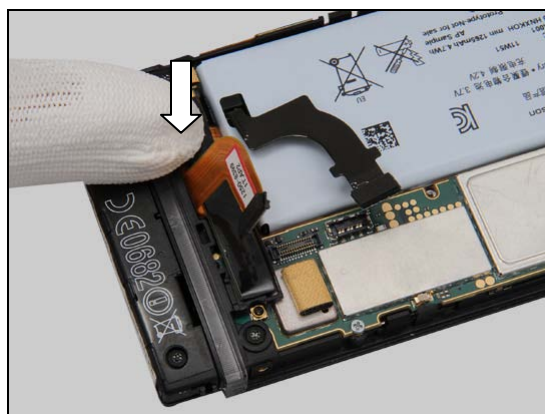
Turn the FPC over.



Press the FPC to secure its attachment as shown.



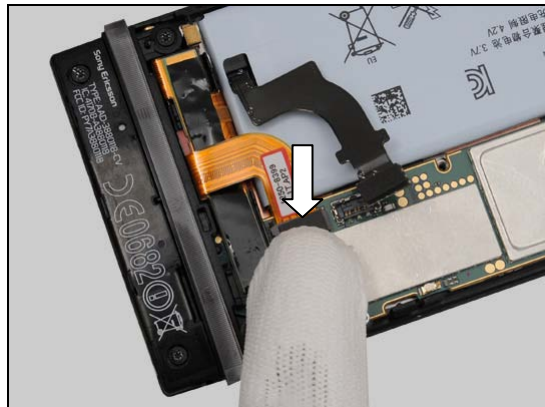
Do the same with this side.



Reassembly

Snap the BtB connector with finger.

Do not snap the BtB connector of Battery!

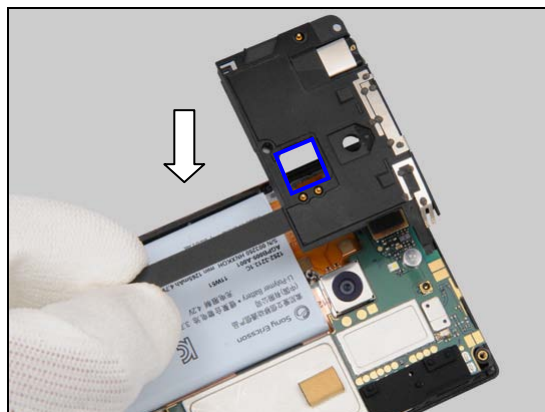


5.4 Carrier Internal Frame Assembly

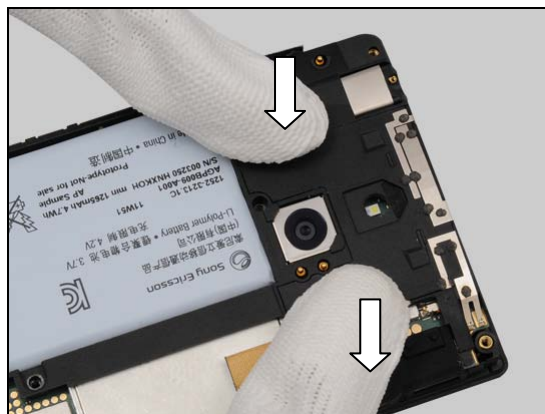
Prepare the Carrier Internal Frame Assembly and the front unit.



Place the Carrier Internal Frame Assembly on the front unit to secure the Main Camera mounted into the cavity as indicated by the blue rectangle.

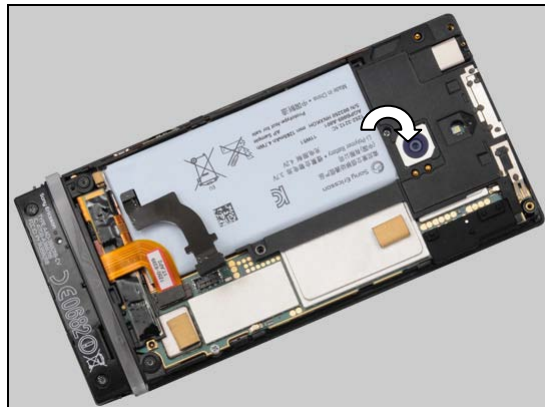


Press to secure its position.



Reassembly

Apply 8 Ncm torque when tightening the screw with Bits (JCIS No 0).

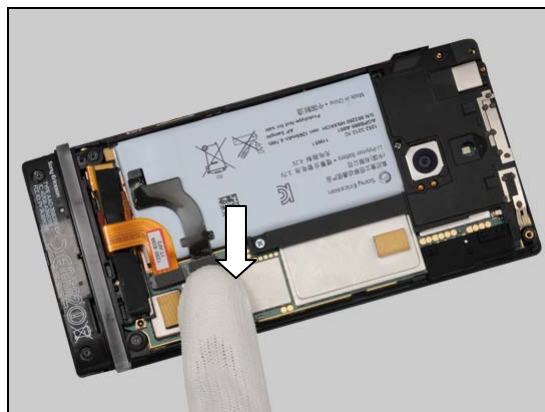


Apply 12 Ncm torque when tightening the screw with Bits (JCIS No 0).

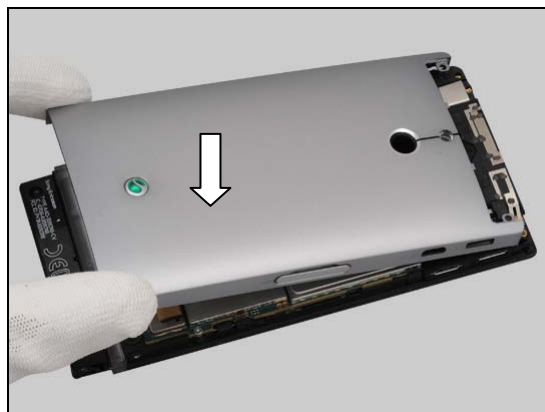


5.5 Cover Rear Metal Assy

Snap the BtB connector with finger.

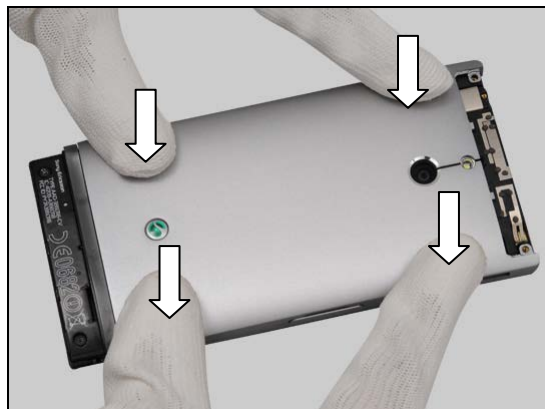


Place the Cover Rear Metal Assy onto the front unit.



Reassembly

Press to secure its position.



Apply 12 Ncm torque when tightening the two screws with Bits (JCIS No 0).



Apply 5 Ncm torque when tightening the screw with Bits (T4).



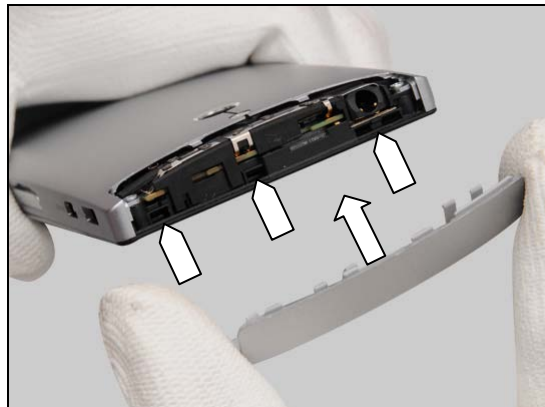
Apply 5 Ncm torque when tightening the screw on the opposite side with Bits (T4).



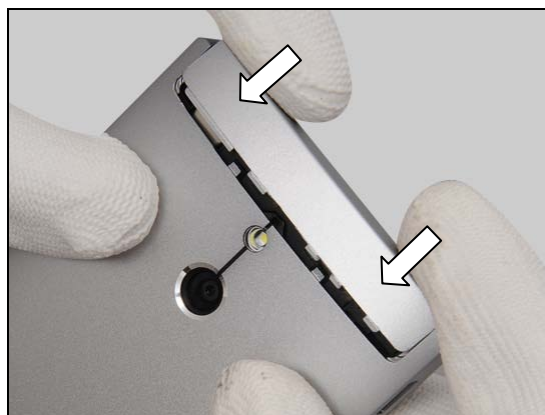
Reassembly

5.6 Cap Top Assembly

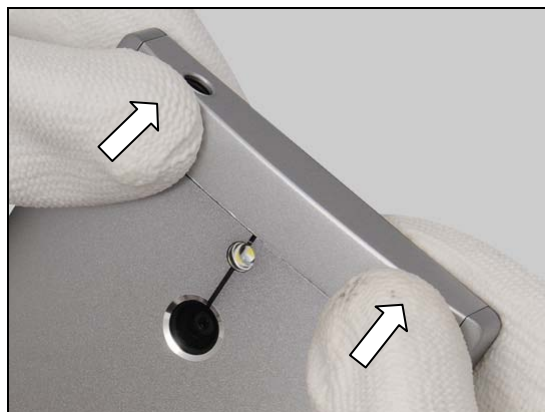
Insert the Cap Top Assembly into the front unit as indicated by the pointers and the arrow.



Press to snap the hooks.



Press to make it securely snapped.



5.7 Cap Cosmetic cap assy

Place the Cap Cosmetic cap assy on the proper position.



Reassembly

Push to snap the hooks.



6 Revision History

Rev.	Date	Changes / Comments
1	2012-May-7	Initial release
2	2012-Jun-20	Update the chapter of Battery, Foil Battery Adhesive & Board SWAP - replacement
3	2012-Aug-30	Update 2.21 Display and added 4.45 Board Swap – Customize of Software